



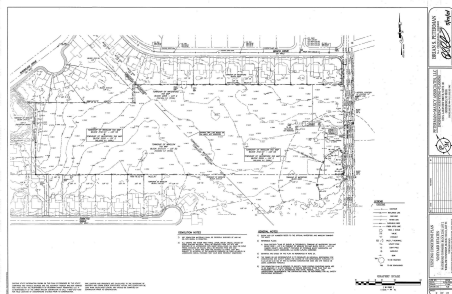
Berger Realty, Inc.  
3160 Asbury Avenue  
Ocean City, NJ 08226  
1-877-237-4371 / 609-399-0076  
info@bergerrealty.com



327 Vineyard, Atco, NJ, 08004

Price \$1,300,000.00

#### PROPERTY DETAILS



Total Rooms	
Bedrooms	0
Baths Full	0
Baths Half	0
Year Built	
Type	
Block Number	3101.01
Listing #	603010
Taxes	9362.00

#### COMMENTS

Prime 12.9± acre residential development site on Vineyard Rd in Waterford Twp/Atco with engineering completed for a proposed 27-lot subdivision: 24 buildable single-family lots plus 3 basin/open-space lots (plans available upon request). Property is surrounded by established neighborhoods and is an ideal location for a new residential community in a low-inventory market. ...

#### PROPERTY FEATURES

#### CONTACT



Ask for Sean McGinnis  
Berger Realty Inc  
3160 Asbury Avenue, Ocean City  
Call: 609-703-9955  
Email to: smc@bergerrealty.com

Scan to see Property page.



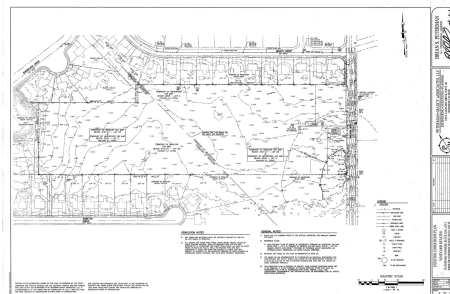
Berger Realty, Inc.  
3160 Asbury Avenue  
Ocean City, NJ 08226  
1-877-237-4371 / 609-399-0076  
info@bergerrealty.com



327 Vineyard, Atco, NJ, 08004

Price \$1,300,000.00

#### PROPERTY DETAILS



Total Rooms	
Bedrooms	0
Baths Full	0
Baths Half	0
Year Built	
Type	
Block Number	3101.01
Listing #	603010
Taxes	9362.00

#### COMMENTS

Prime 12.9± acre residential development site on Vineyard Rd in Waterford Twp/Atco with engineering completed for a proposed 27-lot subdivision: 24 buildable single-family lots plus 3 basin/open-space lots (plans available upon request). Property is surrounded by established neighborhoods and is an ideal location for a new residential community in a low-inventory market. ...

#### PROPERTY FEATURES

#### CONTACT



Ask for Sean McGinnis  
Berger Realty Inc  
3160 Asbury Avenue, Ocean City  
Call: 609-703-9955  
Email to: smc@bergerrealty.com

Scan to see Property page.

