

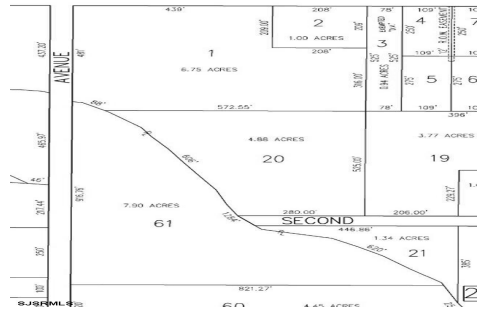


Berger Realty, Inc.
3160 Asbury Avenue
Ocean City, NJ 08226
1-877-237-4371 / 609-399-0076
info@bergerrealty.com



4014 Ridge, Egg Harbor Township, NJ, 08234

Price \$89,000.00



PROPERTY DETAILS

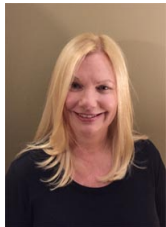
Total Rooms	0
Bedrooms	0
Baths Full	0
Baths Half	0
Year Built	
Type	
Block Number	203
Listing #	602481
Taxes	1051.00

COMMENTS

7.9 Acres of pristine wooded residential land situated in the heart of Egg Harbor Township. Lovely stream forms one of long borders of property. Nature of property only appreciated by venturing deep into lot to see huge cedars and mature vegetation. RG 2 Zoning With over 900 feet of frontage, the potential for development is significant...

PROPERTY FEATURES

CONTACT



Ask for Dawn Warren
Berger Realty Inc
3160 Asbury Avenue, Ocean City
Call: 609-432-4966
Email to: dew@bergerrealty.com

Scan to see Property page.

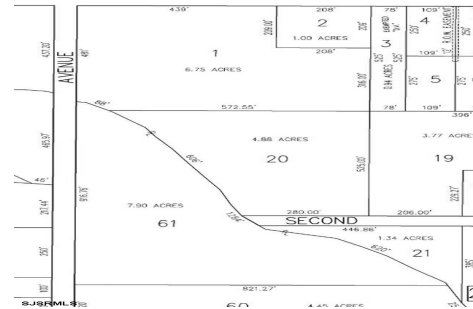


Berger Realty, Inc.
3160 Asbury Avenue
Ocean City, NJ 08226
1-877-237-4371 / 609-399-0076
info@bergerrealty.com



4014 Ridge, Egg Harbor Township, NJ, 08234

Price \$89,000.00



PROPERTY DETAILS

Total Rooms	0
Bedrooms	0
Baths Full	0
Baths Half	0
Year Built	
Type	
Block Number	203
Listing #	602481
Taxes	1051.00

COMMENTS

7.9 Acres of pristine wooded residential land situated in the heart of Egg Harbor Township. Lovely stream forms one of long borders of property. Nature of property only appreciated by venturing deep into lot to see huge cedars and mature vegetation. RG 2 Zoning With over 900 feet of frontage, the potential for development is significant...

PROPERTY FEATURES

CONTACT



Ask for Dawn Warren
Berger Realty Inc
3160 Asbury Avenue, Ocean City
Call: 609-432-4966
Email to: dew@bergerrealty.com

Scan to see Property page.

