



Berger Realty, Inc.
3160 Asbury Avenue
Ocean City, NJ 08226
1-877-237-4371 / 609-399-0076
info@bergerrealty.com



720 New Rd Apt 2M, 2M, Absecon, NJ, 08201

Price \$160,000.00



PROPERTY DETAILS

Total Rooms	5
Bedrooms	2
Baths Full	1
Baths Half	1
Year Built	
Type	Condo
Block Number	290
Listing #	602248
Taxes	2286.00

COMMENTS

*****ABSECON TOWNHOMES AT CALIFORNIA HILL ***** 2 BEDROOM 1.5 BATH TOWN HOME IN THE HEART OF ABSECON. CLOSE TO EVERYTHING-BUS TRANSPORTATION, ATLANTIC CITY CASINOS/BOARDWALK/BEACHES AND MAJOR HIGHWAYS TO PHILA AND NYC. INCLUDES HEAT, WATER AND TRASH COLLECTION. ASSOCIATION FEE APPROX \$350 PER MONTH \$200/MONTH TAXES SELLING IN AS IN CONDITION-NEEDS WORK. *****AFTER...

PROPERTY FEATURES

ParkingGarage	Heating	Water	Sewer
None	Forced Air	Public Water	Public Sewer
	Gas-Natural		

CONTACT



Ask for John Clarke
Berger Realty Inc
3160 Asbury Avenue, Ocean City
Call: 609-289-6111
Email to: jwc@bergerrealty.com

Scan to see Property page.

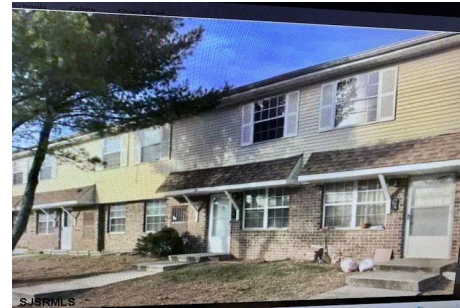


Berger Realty, Inc.
3160 Asbury Avenue
Ocean City, NJ 08226
1-877-237-4371 / 609-399-0076
info@bergerrealty.com



720 New Rd Apt 2M, 2M, Absecon, NJ, 08201

Price \$160,000.00



PROPERTY DETAILS

Total Rooms	5
Bedrooms	2
Baths Full	1
Baths Half	1
Year Built	
Type	Condo
Block Number	290
Listing #	602248
Taxes	2286.00

COMMENTS

*****ABSECON TOWNHOMES AT CALIFORNIA HILL ***** 2 BEDROOM 1.5 BATH TOWN HOME IN THE HEART OF ABSECON. CLOSE TO EVERYTHING-BUS TRANSPORTATION, ATLANTIC CITY CASINOS/BOARDWALK/BEACHES AND MAJOR HIGHWAYS TO PHILA AND NYC. INCLUDES HEAT, WATER AND TRASH COLLECTION. ASSOCIATION FEE APPROX \$350 PER MONTH \$200/MONTH TAXES SELLING IN AS IN CONDITION-NEEDS WORK. *****AFTER...

PROPERTY FEATURES

ParkingGarage	Heating	Water	Sewer
None	Forced Air	Public Water	Public Sewer
	Gas-Natural		

CONTACT



Ask for John Clarke
Berger Realty Inc
3160 Asbury Avenue, Ocean City
Call: 609-289-6111
Email to: jwc@bergerrealty.com

Scan to see Property page.

