

Berger Realty

Since 1926



Berger Realty, Inc.
3160 Asbury Avenue
Ocean City, NJ 08226
1-877-237-4371 / 609-399-0076
info@bergerrealty.com



614-626 Union, Buena Vista Township, NJ, 08360

Price \$899,000.00

PROPERTY DETAILS

Total Rooms	
Bedrooms	0
Baths Full	0
Baths Half	0
Year Built	1988
Type	
Block Number	7701
Listing #	600950
Taxes	38935.00

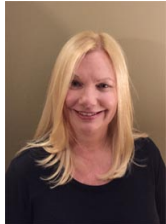
COMMENTS

Why settle for one commercial building when you can have three? Presenting an incredible opportunity at the corner of Landis Ave & Union Rd in East Vineland, Buena Vista Twp, Atlantic County, NJ—featuring three buildings totaling over 25,000 sq. ft. on just over 7 acres, all with two separate zoning districts offering versatile possibilities. The corner building, approx...

PROPERTY FEATURES

Water	Sewer
Private	Private
Well	Septic

CONTACT



Ask for Dawn Warren
Berger Realty Inc
3160 Asbury Avenue, Ocean City
Call: 609-432-4966
Email to: dew@bergerrealty.com

Scan to see Property page.



Berger Realty

Since 1926



Berger Realty, Inc.
3160 Asbury Avenue
Ocean City, NJ 08226
1-877-237-4371 / 609-399-0076
info@bergerrealty.com



614-626 Union, Buena Vista Township, NJ, 08360

Price \$899,000.00

PROPERTY DETAILS

Total Rooms	
Bedrooms	0
Baths Full	0
Baths Half	0
Year Built	1988
Type	
Block Number	7701
Listing #	600950
Taxes	38935.00

COMMENTS

Why settle for one commercial building when you can have three? Presenting an incredible opportunity at the corner of Landis Ave & Union Rd in East Vineland, Buena Vista Twp, Atlantic County, NJ—featuring three buildings totaling over 25,000 sq. ft. on just over 7 acres, all with two separate zoning districts offering versatile possibilities. The corner building, approx...

PROPERTY FEATURES

Water	Sewer
Private	Private
Well	Septic

CONTACT



Ask for Dawn Warren
Berger Realty Inc
3160 Asbury Avenue, Ocean City
Call: 609-432-4966
Email to: dew@bergerrealty.com

Scan to see Property page.

