



Berger Realty, Inc.
3160 Asbury Avenue
Ocean City, NJ 08226
1-877-237-4371 / 609-399-0076
info@bergerrealty.com



6414 Strand Ave, Mays Landing, NJ, 08330

Price \$75,000.00

PROPERTY DETAILS

Total Rooms	
Bedrooms	0
Baths Full	0
Baths Half	0
Year Built	
Type	
Block Number	538
Listing #	600700
Taxes	786.00

COMMENTS

*****1 ACRE PINELANDS APPROVED BUILDABLE LOT** in desirable area of Hamilton Twp***
Pinelands approved with certificate of filing. Just submit your building plans. Utilities available: Natural gas, overhead electric, well, and septic. This property is grandfathered in a 10-acre zone and includes an additional non-contiguous 10-acre lot nearby, offering a variety of recreationa...

PROPERTY FEATURES

CONTACT



Ask for Lauren Greiner
Berger Realty Inc
3160 Asbury Avenue, Ocean City
Call: 609-602-5960
Email to: lmg@bergerrealty.com

Scan to see Property page.



Berger Realty, Inc.
3160 Asbury Avenue
Ocean City, NJ 08226
1-877-237-4371 / 609-399-0076
info@bergerrealty.com



6414 Strand Ave, Mays Landing, NJ, 08330

Price \$75,000.00

PROPERTY DETAILS

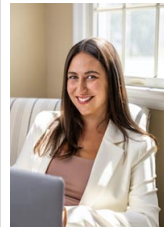
Total Rooms	
Bedrooms	0
Baths Full	0
Baths Half	0
Year Built	
Type	
Block Number	538
Listing #	600700
Taxes	786.00

COMMENTS

*****1 ACRE PINELANDS APPROVED BUILDABLE LOT** in desirable area of Hamilton Twp***
Pinelands approved with certificate of filing. Just submit your building plans. Utilities available: Natural gas, overhead electric, well, and septic. This property is grandfathered in a 10-acre zone and includes an additional non-contiguous 10-acre lot nearby, offering a variety of recreationa...

PROPERTY FEATURES

CONTACT



Ask for Lauren Greiner
Berger Realty Inc
3160 Asbury Avenue, Ocean City
Call: 609-602-5960
Email to: lmg@bergerrealty.com

Scan to see Property page.

