

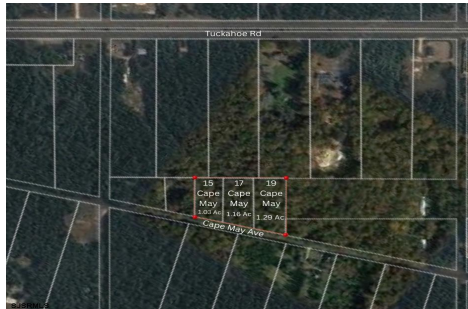


Berger Realty, Inc.
3160 Asbury Avenue
Ocean City, NJ 08226
1-877-237-4371 / 609-399-0076
info@bergerrealty.com



15, 17, & 19 Cape May Ave, Dorothy, NJ, 08317

Price \$50,000.00



PROPERTY DETAILS

Total Rooms	0
Bedrooms	0
Baths Full	0
Baths Half	0
Year Built	
Type	
Block Number	5
Listing #	599999
Taxes	300.00

COMMENTS

3 Contiguous lots on Cape May Avenue between 14th and 15th Avenue zoned Pinelands Village Residential. Together the lots come to just under 3.5 Acres. The lots currently have no approvals to build, the buyer will be responsible to do their own due diligence. The sellers have additional lots available if land is needed for deed restrictions and/or Pinelands credits....

PROPERTY FEATURES

CONTACT

Berger Realty Inc
3160 Asbury Ave.
Ocean City, NJ 08226
Call: (609) 399-0076
Email to: info@bergerrealty.com
Web: www.bergerrealty.com

Scan to see Property page.

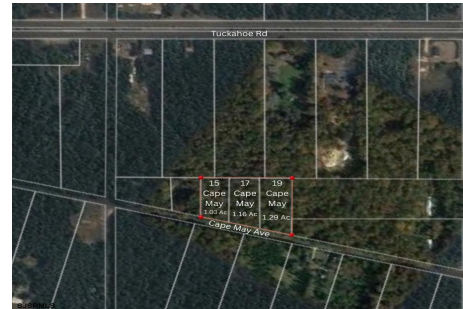


Berger Realty, Inc.
3160 Asbury Avenue
Ocean City, NJ 08226
1-877-237-4371 / 609-399-0076
info@bergerrealty.com



15, 17, & 19 Cape May Ave, Dorothy, NJ, 08317

Price \$50,000.00



PROPERTY DETAILS

Total Rooms	0
Bedrooms	0
Baths Full	0
Baths Half	0
Year Built	
Type	
Block Number	5
Listing #	599999
Taxes	300.00

COMMENTS

3 Contiguous lots on Cape May Avenue between 14th and 15th Avenue zoned Pinelands Village Residential. Together the lots come to just under 3.5 Acres. The lots currently have no approvals to build, the buyer will be responsible to do their own due diligence. The sellers have additional lots available if land is needed for deed restrictions and/or Pinelands credits....

PROPERTY FEATURES

CONTACT

Berger Realty Inc
3160 Asbury Ave.
Ocean City, NJ 08226
Call: (609) 399-0076
Email to: info@bergerrealty.com
Web: www.bergerrealty.com

Scan to see Property page.

