

Berger Realty

Since 1926



Berger Realty, Inc.
3160 Asbury Avenue
Ocean City, NJ 08226
1-877-237-4371 / 609-399-0076
info@bergerrealty.com



218 Seaside Ave, Atlantic City, NJ, 08401

Price \$148,000.00



PROPERTY DETAILS

Total Rooms	
Bedrooms	0
Baths Full	0
Baths Half	0
Year Built	
Type	
Block Number	76
Listing #	599177
Taxes	2171.00

COMMENTS

218 Seaside Ave, Vacant Lot 2590 sq. ft., with potential for parking use for all buildings or to be included in a townhome development site. It can be combined with adjacent lots at 220 and 222 Seaside if purchased together. A total of 3 lots, measuring 7490 sq. ft., can accommodate four four-story townhomes with parking below. LH-2 Zoning District, zoned for multi-famil...

PROPERTY FEATURES

CONTACT



Ask for Margarita Kobilianets
Berger Realty Inc
3160 Asbury Avenue, Ocean City
Call: 609-674-3417
Email to: mak@bergerrealty.com

Scan to see Property page.



Berger Realty

Since 1926



Berger Realty, Inc.
3160 Asbury Avenue
Ocean City, NJ 08226
1-877-237-4371 / 609-399-0076
info@bergerrealty.com



218 Seaside Ave, Atlantic City, NJ, 08401

Price \$148,000.00



PROPERTY DETAILS

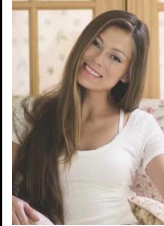
Total Rooms	
Bedrooms	0
Baths Full	0
Baths Half	0
Year Built	
Type	
Block Number	76
Listing #	599177
Taxes	2171.00

COMMENTS

218 Seaside Ave, Vacant Lot 2590 sq. ft., with potential for parking use for all buildings or to be included in a townhome development site. It can be combined with adjacent lots at 220 and 222 Seaside if purchased together. A total of 3 lots, measuring 7490 sq. ft., can accommodate four four-story townhomes with parking below. LH-2 Zoning District, zoned for multi-famil...

PROPERTY FEATURES

CONTACT



Ask for Margarita Kobilianets
Berger Realty Inc
3160 Asbury Avenue, Ocean City
Call: 609-674-3417
Email to: mak@bergerrealty.com

Scan to see Property page.

