



Berger Realty, Inc.
3160 Asbury Avenue
Ocean City, NJ 08226
1-877-237-4371 / 609-399-0076
info@bergerrealty.com



435 OAKSHADE ROAD, Shamong Township, NJ, 08088

Price \$579,000.00

PROPERTY DETAILS

Total Rooms	
Bedrooms	0
Baths Full	0
Baths Half	0
Year Built	
Type	
Block Number	5.13
Listing #	599175
Taxes	7205.00

COMMENTS

OFFICE BUILDING OR SCHOOL ON 1.6 ACRES WITH 20 PARKING SPACES. PREVIOUSLY OPERATED AS A DAY CARE CENTER....

PROPERTY FEATURES

Exterior Vinyl	OutsideFeatures Sign	ParkingGarage 11 or More Spaces	Basement Unfinished
Heating Forced Air Gas-Natural Multi-Zoned	Cooling Central Multi-Zoned	HotWater Gas	Water Well
Sewer Septic			

CONTACT



Ask for Margarita Kobilianets
Berger Realty Inc
3160 Asbury Avenue, Ocean City
Call: 609-674-3417
Email to: mak@bergerrealty.com

Scan to see Property page.



Berger Realty, Inc.
3160 Asbury Avenue
Ocean City, NJ 08226
1-877-237-4371 / 609-399-0076
info@bergerrealty.com



435 OAKSHADE ROAD, Shamong Township, NJ, 08088

Price \$579,000.00

PROPERTY DETAILS

Total Rooms	
Bedrooms	0
Baths Full	0
Baths Half	0
Year Built	
Type	
Block Number	5.13
Listing #	599175
Taxes	7205.00

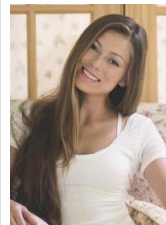
COMMENTS

OFFICE BUILDING OR SCHOOL ON 1.6 ACRES WITH 20 PARKING SPACES. PREVIOUSLY OPERATED AS A DAY CARE CENTER....

PROPERTY FEATURES

Exterior Vinyl	OutsideFeatures Sign	ParkingGarage 11 or More Spaces	Basement Unfinished
Heating Forced Air Gas-Natural Multi-Zoned	Cooling Central Multi-Zoned	HotWater Gas	Water Well
Sewer Septic			

CONTACT



Ask for Margarita Kobilianets
Berger Realty Inc
3160 Asbury Avenue, Ocean City
Call: 609-674-3417
Email to: mak@bergerrealty.com

Scan to see Property page.

