



Berger Realty, Inc.
3160 Asbury Avenue
Ocean City, NJ 08226
1-877-237-4371 / 609-399-0076
info@bergerrealty.com



510 Derby, Ventnor Heights, NJ, 08406

Price \$579,000.00



PROPERTY DETAILS

Total Rooms	7
Bedrooms	3
Baths Full	1
Baths Half	1
Year Built	
Type	Single Family
Block Number	288
Listing #	598719
Taxes	5220.00

COMMENTS

Why Buy in Ventnor Heights, NJ (1) Prime Location Without the Price Tag of the Oceanfront. Ventnor Heights offers easy access to the beach and bay without the premium prices of oceanfront streets. You're minutes to the boardwalk, yet nestled in a quiet, residential community that feels more relaxed and local. (2) Walkable, Laid-Back Coastal Vibe. Close to Ski Beach, publi...

PROPERTY FEATURES

ParkingGarage	Heating	Cooling	HotWater
One Car	Forced Air	Central	Tankless-gas
Water	Sewer		
Public	Public Sewer		

CONTACT



Ask for Thomas Byrne
Berger Realty Inc
3160 Asbury Avenue, Ocean City
Call: 215-327-9152
Email to: tfb@bergerrealty.com

Scan to see Property page.

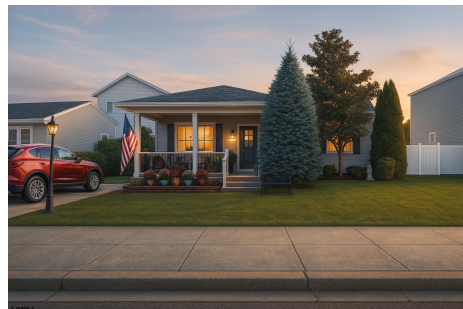


Berger Realty, Inc.
3160 Asbury Avenue
Ocean City, NJ 08226
1-877-237-4371 / 609-399-0076
info@bergerrealty.com



510 Derby, Ventnor Heights, NJ, 08406

Price \$579,000.00



PROPERTY DETAILS

Total Rooms	7
Bedrooms	3
Baths Full	1
Baths Half	1
Year Built	
Type	Single Family
Block Number	288
Listing #	598719
Taxes	5220.00

COMMENTS

Why Buy in Ventnor Heights, NJ (1) Prime Location Without the Price Tag of the Oceanfront. Ventnor Heights offers easy access to the beach and bay without the premium prices of oceanfront streets. You're minutes to the boardwalk, yet nestled in a quiet, residential community that feels more relaxed and local. (2) Walkable, Laid-Back Coastal Vibe. Close to Ski Beach, publi...

PROPERTY FEATURES

ParkingGarage	Heating	Cooling	HotWater
One Car	Forced Air	Central	Tankless-gas
Water	Sewer		
Public	Public Sewer		

CONTACT



Ask for Thomas Byrne
Berger Realty Inc
3160 Asbury Avenue, Ocean City
Call: 215-327-9152
Email to: tfb@bergerrealty.com

Scan to see Property page.

