

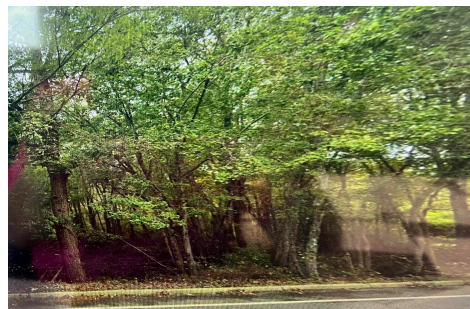


Berger Realty, Inc.
3160 Asbury Avenue
Ocean City, NJ 08226
1-877-237-4371 / 609-399-0076
info@bergerrealty.com



409 Delaware Ave, Egg Harbor Township, NJ, 08234

Price \$250,000.00



PROPERTY DETAILS

Total Rooms	
Bedrooms	0
Baths Full	0
Baths Half	0
Year Built	
Type	
Block Number	05304
Listing #	598647
Taxes	2052.00

COMMENTS

Great opportunity to build a home on a private 2+ acre lot. No engineering has been done. No access to lot has been created as of yet. No utilities or improvements have been made. This is a vacant lot being sold As Is. Suggested Buyer do all due diligence prior to making any offers....

PROPERTY FEATURES

CONTACT



Ask for Tara Cruser-Moss
Berger Realty Inc
3160 Asbury Avenue, Ocean City
Call: 609-317-5396
Email to: tcm@bergerrealty.com

Scan to see Property page.

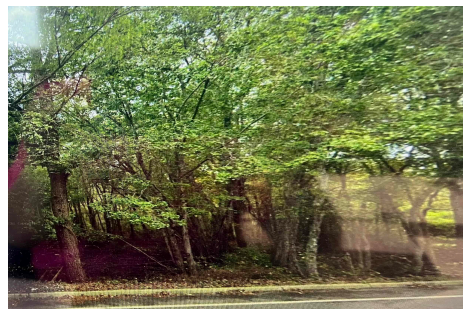


Berger Realty, Inc.
3160 Asbury Avenue
Ocean City, NJ 08226
1-877-237-4371 / 609-399-0076
info@bergerrealty.com



409 Delaware Ave, Egg Harbor Township, NJ, 08234

Price \$250,000.00



PROPERTY DETAILS

Total Rooms	
Bedrooms	0
Baths Full	0
Baths Half	0
Year Built	
Type	
Block Number	05304
Listing #	598647
Taxes	2052.00

COMMENTS

Great opportunity to build a home on a private 2+ acre lot. No engineering has been done. No access to lot has been created as of yet. No utilities or improvements have been made. This is a vacant lot being sold As Is. Suggested Buyer do all due diligence prior to making any offers....

PROPERTY FEATURES

CONTACT



Ask for Tara Cruser-Moss
Berger Realty Inc
3160 Asbury Avenue, Ocean City
Call: 609-317-5396
Email to: tcm@bergerrealty.com

Scan to see Property page.

