

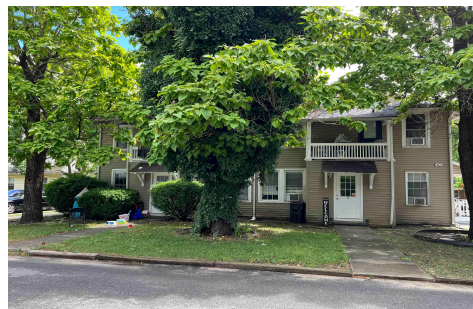


Berger Realty, Inc.
3160 Asbury Avenue
Ocean City, NJ 08226
1-877-237-4371 / 609-399-0076
info@bergerrealty.com



1403 Loretta, Mays Landing, NJ, 08330

Price \$719,900.00



PROPERTY DETAILS

Total Rooms	
Bedrooms	0
Baths Full	0
Baths Half	0
Year Built	
Type	
Block Number	8
Listing #	598613
Taxes	7590.00

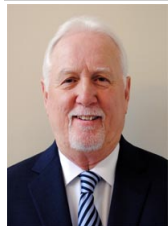
COMMENTS

Rare Investment Opportunity in Mays Landing! This well-maintained quadplex features four spacious 2-bedroom, 1-bath units, each offering excellent rental income potential. Legally zoned as a quadplex, this property presents a unique opportunity to either generate steady cash flow or live in one unit while renting out the other three making this a turnkey investment ideal f...

PROPERTY FEATURES

ParkingGarage	OtherRooms	Basement	Heating
None	Dining Area	Crawl Space	Baseboard
	Kitchen		Gas-Natural
	Living Room		
Cooling	HotWater	Water	Sewer
Window Units	Gas	Public	Public Sewer

CONTACT



Ask for Thomas Byrne
Berger Realty Inc
3160 Asbury Avenue, Ocean City
Call: 215-327-9152
Email to: tfb@bergerrealty.com

Scan to see Property page.

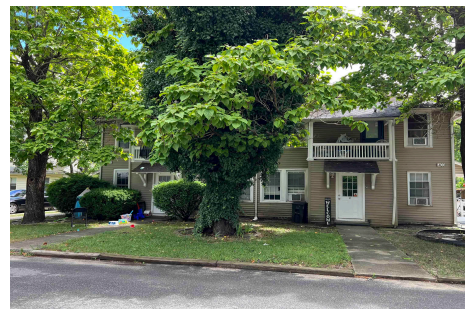


Berger Realty, Inc.
3160 Asbury Avenue
Ocean City, NJ 08226
1-877-237-4371 / 609-399-0076
info@bergerrealty.com



1403 Loretta, Mays Landing, NJ, 08330

Price \$719,900.00



PROPERTY DETAILS

Total Rooms	
Bedrooms	0
Baths Full	0
Baths Half	0
Year Built	
Type	
Block Number	8
Listing #	598613
Taxes	7590.00

COMMENTS

Rare Investment Opportunity in Mays Landing! This well-maintained quadplex features four spacious 2-bedroom, 1-bath units, each offering excellent rental income potential. Legally zoned as a quadplex, this property presents a unique opportunity to either generate steady cash flow or live in one unit while renting out the other three making this a turnkey investment ideal f...

PROPERTY FEATURES

ParkingGarage	OtherRooms	Basement	Heating
None	Dining Area	Crawl Space	Baseboard
	Kitchen		Gas-Natural
	Living Room		
Cooling	HotWater	Water	Sewer
Window Units	Gas	Public	Public Sewer

CONTACT



Ask for Thomas Byrne
Berger Realty Inc
3160 Asbury Avenue, Ocean City
Call: 215-327-9152
Email to: tfb@bergerrealty.com

Scan to see Property page.

