

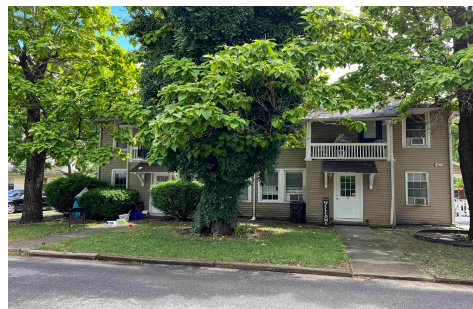


Berger Realty, Inc.  
3160 Asbury Avenue  
Ocean City, NJ 08226  
1-877-237-4371 / 609-399-0076  
info@bergerrealty.com



1403 Loretta, Mays Landing, NJ, 08330

Price \$719,900.00



#### PROPERTY DETAILS

Total Rooms	
Bedrooms	0
Baths Full	0
Baths Half	0
Year Built	
Type	
Block Number	8
Listing #	598613
Taxes	7590.00

#### COMMENTS

*Rare Investment Opportunity in Mays Landing! This well-maintained quadplex features four spacious 2-bedroom, 1-bath units, each offering excellent rental income potential. Legally zoned as a quadplex, this property presents a unique opportunity to either generate steady cash flow or live in one unit while renting out the other three making this a turnkey investment ideal f...*

#### PROPERTY FEATURES

ParkingGarage	OtherRooms	Basement	Heating
None	Dining Area	Crawl Space	Baseboard
	Kitchen		Gas-Natural
	Living Room		
Cooling	HotWater	Water	Sewer
Window Units	Gas	Public	Public Sewer

#### CONTACT



Ask for Ben Duncan  
Berger Realty Inc  
3160 Asbury Avenue, Ocean City  
Call: 609-600-7531  
Email to: bmd@bergerrealty.com

Scan to see Property page.



Berger Realty, Inc.  
3160 Asbury Avenue  
Ocean City, NJ 08226  
1-877-237-4371 / 609-399-0076  
info@bergerrealty.com



1403 Loretta, Mays Landing, NJ, 08330

Price \$719,900.00



#### PROPERTY DETAILS

Total Rooms	
Bedrooms	0
Baths Full	0
Baths Half	0
Year Built	
Type	
Block Number	8
Listing #	598613
Taxes	7590.00

#### COMMENTS

*Rare Investment Opportunity in Mays Landing! This well-maintained quadplex features four spacious 2-bedroom, 1-bath units, each offering excellent rental income potential. Legally zoned as a quadplex, this property presents a unique opportunity to either generate steady cash flow or live in one unit while renting out the other three making this a turnkey investment ideal f...*

#### PROPERTY FEATURES

ParkingGarage	OtherRooms	Basement	Heating
None	Dining Area	Crawl Space	Baseboard
	Kitchen		Gas-Natural
	Living Room		
Cooling	HotWater	Water	Sewer
Window Units	Gas	Public	Public Sewer

#### CONTACT



Ask for Ben Duncan  
Berger Realty Inc  
3160 Asbury Avenue, Ocean City  
Call: 609-600-7531  
Email to: bmd@bergerrealty.com

Scan to see Property page.

