

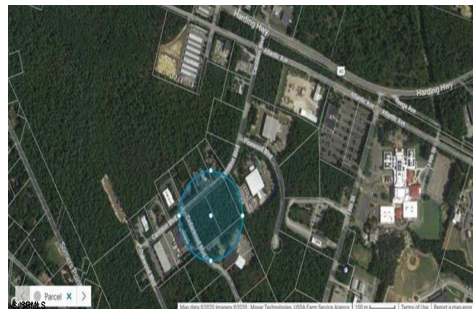


Berger Realty, Inc.
3160 Asbury Avenue
Ocean City, NJ 08226
1-877-237-4371 / 609-399-0076
info@bergerrealty.com



1410 Cantillon Blvd, Mays Landing, NJ, 08330

Price \$560,000.00



PROPERTY DETAILS

Total Rooms	
Bedrooms	0
Baths Full	0
Baths Half	0
Year Built	
Type	
Block Number	994
Listing #	598577
Taxes	2839.00

COMMENTS

Hamilton Twp. fully approved lot in Atlantic County. Hamilton Business Park allows for offices, warehouses, light manufacturing, medical facility, banks, gyms, general business. (all subject to approvals) This 5.33 Acre lot has all approvals to build a 40,000 sq. ft building for an approved business. All Pinelands leg work has been completed and approved ready to start ...

PROPERTY FEATURES

CONTACT



Ask for Michael Devlin
Berger Realty Inc
3160 Asbury Avenue, Ocean City
Call: 609-306-3730
Email to: msd@bergerrealty.com

Scan to see Property page.



Berger Realty, Inc.
3160 Asbury Avenue
Ocean City, NJ 08226
1-877-237-4371 / 609-399-0076
info@bergerrealty.com



1410 Cantillon Blvd, Mays Landing, NJ, 08330

Price \$560,000.00



PROPERTY DETAILS

Total Rooms	
Bedrooms	0
Baths Full	0
Baths Half	0
Year Built	
Type	
Block Number	994
Listing #	598577
Taxes	2839.00

COMMENTS

Hamilton Twp. fully approved lot in Atlantic County. Hamilton Business Park allows for offices, warehouses, light manufacturing, medical facility, banks, gyms, general business. (all subject to approvals) This 5.33 Acre lot has all approvals to build a 40,000 sq. ft building for an approved business. All Pinelands leg work has been completed and approved ready to start ...

PROPERTY FEATURES

CONTACT



Ask for Michael Devlin
Berger Realty Inc
3160 Asbury Avenue, Ocean City
Call: 609-306-3730
Email to: msd@bergerrealty.com

Scan to see Property page.

