

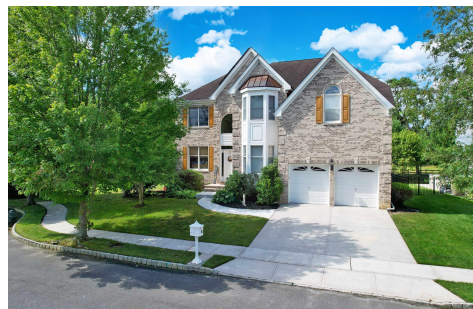


Berger Realty, Inc.  
3160 Asbury Avenue  
Ocean City, NJ 08226  
1-877-237-4371 / 609-399-0076  
info@bergerrealty.com



66 Monet, Mays Landing, NJ, 08330

Price \$689,000.00



#### PROPERTY DETAILS

Total Rooms	10
Bedrooms	4
Baths Full	2
Baths Half	1
Year Built	2007
Type	Single Family
Block Number	1132.09
Listing #	598526
Taxes	11717.00

#### COMMENTS

*Please come in and enjoy the comfort and charm this wonderful home has to offer. Situated in the private community of "Glen Eyre at Mays Landing". As you enter you are graciously greeted by an open two story foyer which is accented by a gorgeous wrought-iron staircase. There are numerous upgraded features including; Anderson winds/doors, custom window treatments, wainsco...*

#### PROPERTY FEATURES

Exterior	OutsideFeatures	ParkingGarage	OtherRooms
Brick	Curbs	Two Car	Dining Room
Vinyl	Fenced Yard	Attached Garage	Eat In Kitchen
	Patio		Laundry/Utility Room
	Pool-Above Ground		Recreation/Family
	Sidewalks		Storage Attic
	Sprinkler System		
InteriorFeatures	AppliancesIncluded	AlsoIncluded	Basement
Cathedral Ceiling	Disposal	Blinds	6 Ft. or More Head
Carbon Monoxide	Dishwasher	Curtains	Room
Detector	Dryer	Drapes	Full
Kitchen Center Island	Electric Stove		Inside Entrance
Storage	Microwave		Unfinished
Skylight(s)	Refrigerator		
Smoke/Fire Alarm	Self Cleaning Oven		
Walk In Closet	Washer		
Heating	Cooling	HotWater	Water
Forced Air	Ceiling Fan(s)	Gas	Public
Gas-Natural	Central		
Multi-Zoned	Gas		
	Multi-Zoned		
Sewer			
Public Sewer			

#### CONTACT

Berger Realty Inc

Scan to see Property page.

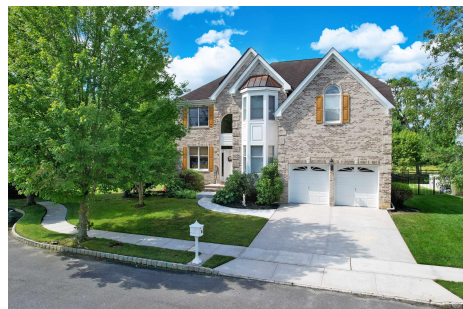


Berger Realty, Inc.  
3160 Asbury Avenue  
Ocean City, NJ 08226  
1-877-237-4371 / 609-399-0076  
info@bergerrealty.com



66 Monet, Mays Landing, NJ, 08330

Price \$689,000.00



#### PROPERTY DETAILS

Total Rooms	10
Bedrooms	4
Baths Full	2
Baths Half	1
Year Built	2007
Type	Single Family
Block Number	1132.09
Listing #	598526
Taxes	11717.00

#### COMMENTS

*Please come in and enjoy the comfort and charm this wonderful home has to offer. Situated in the private community of "Glen Eyre at Mays Landing". As you enter you are graciously greeted by an open two story foyer which is accented by a gorgeous wrought-iron staircase. There are numerous upgraded features including; Anderson winds/doors, custom window treatments, wainsco...*

#### PROPERTY FEATURES

Exterior	OutsideFeatures	ParkingGarage	OtherRooms
Brick	Curbs	Two Car	Dining Room
Vinyl	Fenced Yard	Attached Garage	Eat In Kitchen
	Patio		Laundry/Utility Room
	Pool-Above Ground		Recreation/Family
	Sidewalks		Storage Attic
	Sprinkler System		
InteriorFeatures	AppliancesIncluded	AlsoIncluded	Basement
Cathedral Ceiling	Disposal	Blinds	6 Ft. or More Head
Carbon Monoxide	Dishwasher	Curtains	Room
Detector	Dryer	Drapes	Full
Kitchen Center Island	Electric Stove		Inside Entrance
Storage	Microwave		Unfinished
Skylight(s)	Refrigerator		
Smoke/Fire Alarm	Self Cleaning Oven		
Walk In Closet	Washer		
Heating	Cooling	HotWater	Water
Forced Air	Ceiling Fan(s)	Gas	Public
Gas-Natural	Central		
Multi-Zoned	Gas		
	Multi-Zoned		
Sewer			
Public Sewer			

#### CONTACT

Berger Realty Inc

Scan to see Property page.

3160 Asbury Ave.  
Ocean City, NJ 08226  
Call: (609) 399-0076  
Email to: [info@bergerrealty.com](mailto:info@bergerrealty.com)  
Web: [www.bergerrealty.com](http://www.bergerrealty.com)

3160 Asbury Ave.  
Ocean City, NJ 08226  
Call: (609) 399-0076  
Email to: [info@bergerrealty.com](mailto:info@bergerrealty.com)  
Web: [www.bergerrealty.com](http://www.bergerrealty.com)

