



Berger Realty, Inc.
3160 Asbury Avenue
Ocean City, NJ 08226
1-877-237-4371 / 609-399-0076
info@bergerrealty.com



132 Connecticut, 132, Atlantic City, NJ, 08401

Price \$249,000.00



PROPERTY DETAILS

Total Rooms	6
Bedrooms	3
Baths Full	2
Baths Half	1
Year Built	
Type	Condo
Block Number	309
Listing #	598498
Taxes	3307.00

COMMENTS

This freshly painted and carpeted 3-bedroom, 2.5-bath townhouse nestled in a park-like setting in Grammery Park, Atlantic City—just three blocks from the beach and iconic Atlantic City boardwalk! Property Highlights - Bright and open layout with plenty of natural light. Private 2-car garage with extra storage space Primary suite with full bath Low-maintenance living in a...

PROPERTY FEATURES

Exterior	ParkingGarage	OtherRooms	InteriorFeatures
Brick Face	Attached Garage	Dining Area	Cathedral Ceiling(s)
Vinyl	Two Car		Pets Allowed
Heating	Cooling	HotWater	Water
Gas-Natural	Central	Electric	Public Water

Sewer
Public Sewer

CONTACT



Ask for Patricia Moss
Berger Realty Inc
3160 Asbury Avenue, Ocean City
Call: 609-335-4616
Email to: tcm@bergerrealty.com

Scan to see Property page.

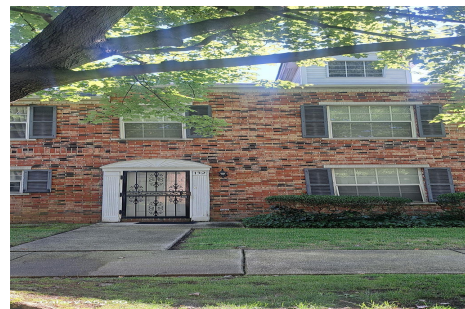


Berger Realty, Inc.
3160 Asbury Avenue
Ocean City, NJ 08226
1-877-237-4371 / 609-399-0076
info@bergerrealty.com



132 Connecticut, 132, Atlantic City, NJ, 08401

Price \$249,000.00



PROPERTY DETAILS

Total Rooms	6
Bedrooms	3
Baths Full	2
Baths Half	1
Year Built	
Type	Condo
Block Number	309
Listing #	598498
Taxes	3307.00

COMMENTS

This freshly painted and carpeted 3-bedroom, 2.5-bath townhouse nestled in a park-like setting in Grammery Park, Atlantic City—just three blocks from the beach and iconic Atlantic City boardwalk! Property Highlights - Bright and open layout with plenty of natural light. Private 2-car garage with extra storage space Primary suite with full bath Low-maintenance living in a...

PROPERTY FEATURES

Exterior	ParkingGarage	OtherRooms	InteriorFeatures
Brick Face	Attached Garage	Dining Area	Cathedral Ceiling(s)
Vinyl	Two Car		Pets Allowed
Heating	Cooling	HotWater	Water
Gas-Natural	Central	Electric	Public Water

Sewer
Public Sewer

CONTACT



Ask for Patricia Moss
Berger Realty Inc
3160 Asbury Avenue, Ocean City
Call: 609-335-4616
Email to: tcm@bergerrealty.com

Scan to see Property page.

