

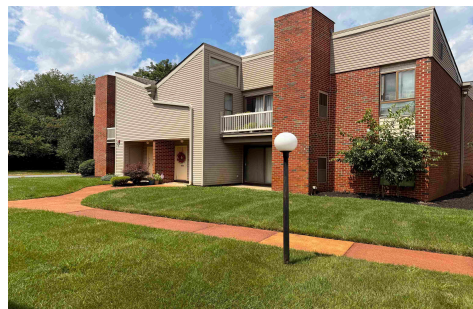


Berger Realty, Inc.
3160 Asbury Avenue
Ocean City, NJ 08226
1-877-237-4371 / 609-399-0076
info@bergerrealty.com



202 Pico, 202, Mays Landing, NJ, 08330

Price \$175,000.00



PROPERTY DETAILS

Total Rooms	6
Bedrooms	2
Baths Full	1
Baths Half	0
Year Built	1973
Type	Condo
Block Number	996
Listing #	598403
Taxes	1876.00

COMMENTS

Attention Investors: Beautiful second floor, 2BR/1Ba unit. with central air, gas heat, Upgraded kitchen and BA with dining area spacious living room and lovely deck overlooking well-maintained grounds. Amenities include pool.. .Close to shopping dining, services, beaches and all that AC has to offer.. Call for a guided tour today...

PROPERTY FEATURES

Exterior	ParkingGarage	OtherRooms	InteriorFeatures
Brick	None	Dining Area	Fireplace(s)
Vinyl		Pantry	Pets Allowed
			Wall to Wall Carpet
Heating	Cooling	HotWater	Water
Gas-Natural	Ceiling Fan(s)	Electric	Public Water
	Central		
Sewer			
Public Sewer			

CONTACT



Ask for Tara Cruser-Moss
Berger Realty Inc
3160 Asbury Avenue, Ocean City
Call: 609-317-5396
Email to: tcm@bergerrealty.com

Scan to see Property page.



Berger Realty, Inc.
3160 Asbury Avenue
Ocean City, NJ 08226
1-877-237-4371 / 609-399-0076
info@bergerrealty.com



202 Pico, 202, Mays Landing, NJ, 08330

Price \$175,000.00



PROPERTY DETAILS

Total Rooms	6
Bedrooms	2
Baths Full	1
Baths Half	0
Year Built	1973
Type	Condo
Block Number	996
Listing #	598403
Taxes	1876.00

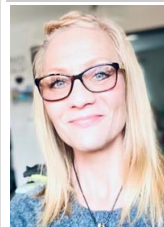
COMMENTS

Attention Investors: Beautiful second floor, 2BR/1Ba unit. with central air, gas heat, Upgraded kitchen and BA with dining area spacious living room and lovely deck overlooking well-maintained grounds. Amenities include pool.. .Close to shopping dining, services, beaches and all that AC has to offer.. Call for a guided tour today...

PROPERTY FEATURES

Exterior	ParkingGarage	OtherRooms	InteriorFeatures
Brick	None	Dining Area	Fireplace(s)
Vinyl		Pantry	Pets Allowed
			Wall to Wall Carpet
Heating	Cooling	HotWater	Water
Gas-Natural	Ceiling Fan(s)	Electric	Public Water
	Central		
Sewer			
Public Sewer			

CONTACT



Ask for Tara Cruser-Moss
Berger Realty Inc
3160 Asbury Avenue, Ocean City
Call: 609-317-5396
Email to: tcm@bergerrealty.com

Scan to see Property page.

