



Berger Realty, Inc.
3160 Asbury Avenue
Ocean City, NJ 08226
1-877-237-4371 / 609-399-0076
info@bergerrealty.com



7684 Black Horse, Hamilton Township, NJ, 08234

Price \$47,500.00



PROPERTY DETAILS

Total Rooms	
Bedrooms	0
Baths Full	0
Baths Half	0
Year Built	
Type	
Block Number	41
Listing #	598326
Taxes	17.00

COMMENTS

Block #41 Lot #5 has approximately 110' frontage and 300' depth (33,000+- sqft). It is an undersized parcel in the Highway Commercial (HC) Zoning District and would require a variance to utilize it for one of the zone's permitted uses....

PROPERTY FEATURES

CONTACT



Ask for Tara Crusier-Moss
Berger Realty Inc
3160 Asbury Avenue, Ocean City
Call: 609-317-5396
Email to: tcm@bergerrealty.com

Scan to see Property page.

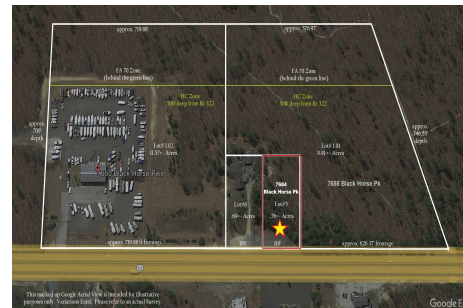


Berger Realty, Inc.
3160 Asbury Avenue
Ocean City, NJ 08226
1-877-237-4371 / 609-399-0076
info@bergerrealty.com



7684 Black Horse, Hamilton Township, NJ, 08234

Price \$47,500.00



PROPERTY DETAILS

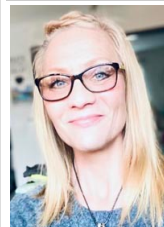
Total Rooms	
Bedrooms	0
Baths Full	0
Baths Half	0
Year Built	
Type	
Block Number	41
Listing #	598326
Taxes	17.00

COMMENTS

Block #41 Lot #5 has approximately 110' frontage and 300' depth (33,000+- sqft). It is an undersized parcel in the Highway Commercial (HC) Zoning District and would require a variance to utilize it for one of the zone's permitted uses....

PROPERTY FEATURES

CONTACT



Ask for Tara Crusier-Moss
Berger Realty Inc
3160 Asbury Avenue, Ocean City
Call: 609-317-5396
Email to: tcm@bergerrealty.com

Scan to see Property page.

