



Berger Realty, Inc.  
3160 Asbury Avenue  
Ocean City, NJ 08226  
1-877-237-4371 / 609-399-0076  
info@bergerrealty.com



7684 Black Horse, Hamilton Township, NJ, 08234

Price \$47,500.00



#### PROPERTY DETAILS

|              |        |
|--------------|--------|
| Total Rooms  | 0      |
| Bedrooms     | 0      |
| Baths Full   | 0      |
| Baths Half   | 0      |
| Year Built   |        |
| Type         |        |
| Block Number | 41     |
| Listing #    | 598326 |
| Taxes        | 17.00  |

#### COMMENTS

*Block #41 Lot #5 has approximately 110' frontage and 300' depth (33,000+- sqft). It is an undersized parcel in the Highway Commercial (HC) Zoning District and would require a variance to utilize it for one of the zone's permitted uses....*

#### PROPERTY FEATURES

#### CONTACT



Ask for Karen A. Becker  
Berger Realty Inc  
3160 Asbury Avenue, Ocean City  
Call: 609-364-0999  
Email to: kab@bergerrealty.com

Scan to see Property page.

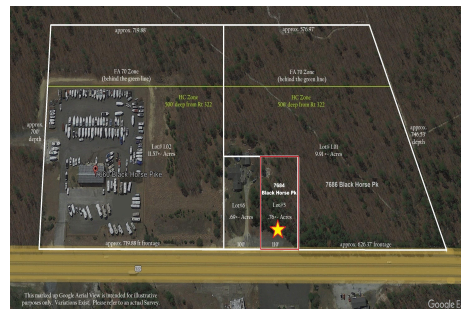


Berger Realty, Inc.  
3160 Asbury Avenue  
Ocean City, NJ 08226  
1-877-237-4371 / 609-399-0076  
info@bergerrealty.com



7684 Black Horse, Hamilton Township, NJ, 08234

Price \$47,500.00



#### PROPERTY DETAILS

|              |        |
|--------------|--------|
| Total Rooms  | 0      |
| Bedrooms     | 0      |
| Baths Full   | 0      |
| Baths Half   | 0      |
| Year Built   |        |
| Type         |        |
| Block Number | 41     |
| Listing #    | 598326 |
| Taxes        | 17.00  |

#### COMMENTS

*Block #41 Lot #5 has approximately 110' frontage and 300' depth (33,000+- sqft). It is an undersized parcel in the Highway Commercial (HC) Zoning District and would require a variance to utilize it for one of the zone's permitted uses....*

#### PROPERTY FEATURES

#### CONTACT



Ask for Karen A. Becker  
Berger Realty Inc  
3160 Asbury Avenue, Ocean City  
Call: 609-364-0999  
Email to: kab@bergerrealty.com

Scan to see Property page.

