

Berger Realty

Since 1926



Berger Realty, Inc.
3160 Asbury Avenue
Ocean City, NJ 08226
1-877-237-4371 / 609-399-0076
info@bergerrealty.com



Berger Realty

Since 1926



Berger Realty, Inc.
3160 Asbury Avenue
Ocean City, NJ 08226
1-877-237-4371 / 609-399-0076
info@bergerrealty.com



7684 Black Horse, Hamilton Township, NJ, 08234

Price \$47,500.00



PROPERTY DETAILS

| | |
|--------------|--------|
| Total Rooms | |
| Bedrooms | 0 |
| Baths Full | 0 |
| Baths Half | 0 |
| Year Built | |
| Type | |
| Block Number | 41 |
| Listing # | 598326 |
| Taxes | 17.00 |

COMMENTS

Block #41 Lot #5 has approximately 110' frontage and 300' depth (33,000+- sqft). It is an undersized parcel in the Highway Commercial (HC) Zoning District and would require a variance to utilize it for one of the zone's permitted uses...

PROPERTY FEATURES

CONTACT



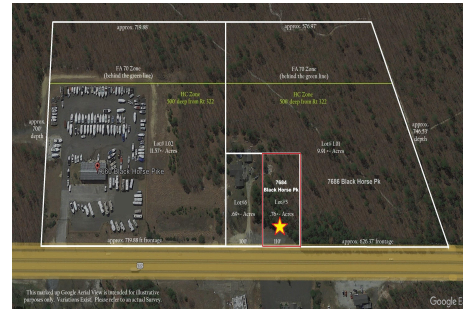
Ask for J.K. Hepner, III
Berger Realty Inc
3160 Asbury Avenue, Ocean City
Call: 609-457-9457
Email to: jkh@bergerrealty.com

Scan to see Property page.



7684 Black Horse, Hamilton Township, NJ, 08234

Price \$47,500.00



PROPERTY DETAILS

| | |
|--------------|--------|
| Total Rooms | |
| Bedrooms | 0 |
| Baths Full | 0 |
| Baths Half | 0 |
| Year Built | |
| Type | |
| Block Number | 41 |
| Listing # | 598326 |
| Taxes | 17.00 |

COMMENTS

Block #41 Lot #5 has approximately 110' frontage and 300' depth (33,000+- sqft). It is an undersized parcel in the Highway Commercial (HC) Zoning District and would require a variance to utilize it for one of the zone's permitted uses...

PROPERTY FEATURES

CONTACT



Ask for J.K. Hepner, III
Berger Realty Inc
3160 Asbury Avenue, Ocean City
Call: 609-457-9457
Email to: jkh@bergerrealty.com

Scan to see Property page.

