



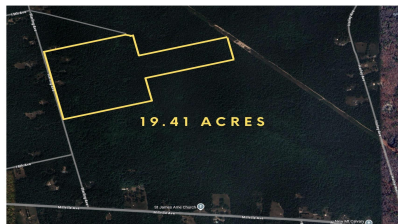
Berger Realty, Inc.
3160 Asbury Avenue
Ocean City, NJ 08226
1-877-237-4371 / 609-399-0076
info@bergerrealty.com



Hunter + Baker, Mays Landing, NJ, 08330

Price \$49,900.00

HUNTER + BAKER
APPROXIMATE LOCATION



VACANT LOTS 14.55 + 4.86 = 19.41 ACRES

PROPERTY DETAILS

Total Rooms	0
Bedrooms	0
Baths Full	0
Baths Half	0
Year Built	
Type	
Block Number	612
Listing #	598287
Taxes	532.00

COMMENTS

Outdoor Enthusiast's Dream Retreat! Discover nearly 20 acres of untouched natural beauty with this 19.41-acre wooded parcel, zoned FA25 and made for adventure. Whether you're an avid hunter, camper, or ATV trail rider, this land offers the ultimate recreational escape. Tucked away in a peaceful, private setting, the property boasts mature trees, abundant wildlife, and ...

PROPERTY FEATURES

CONTACT

SALE



BADERCOLLINS.COM

Ask for Bader - Collins Associates
Berger Realty Inc
3160 Asbury Avenue, Ocean City
Call:
Email to: bca@bergerrealty.com
<http://www.BADERCOLLINS.com>

Scan to see Property page.



Berger Realty, Inc.
3160 Asbury Avenue
Ocean City, NJ 08226
1-877-237-4371 / 609-399-0076
info@bergerrealty.com



Hunter + Baker, Mays Landing, NJ, 08330

Price \$49,900.00

HUNTER + BAKER
APPROXIMATE LOCATION



VACANT LOTS 14.55 + 4.86 = 19.41 ACRES

PROPERTY DETAILS

Total Rooms	0
Bedrooms	0
Baths Full	0
Baths Half	0
Year Built	
Type	
Block Number	612
Listing #	598287
Taxes	532.00

COMMENTS

Outdoor Enthusiast's Dream Retreat! Discover nearly 20 acres of untouched natural beauty with this 19.41-acre wooded parcel, zoned FA25 and made for adventure. Whether you're an avid hunter, camper, or ATV trail rider, this land offers the ultimate recreational escape. Tucked away in a peaceful, private setting, the property boasts mature trees, abundant wildlife, and ...

PROPERTY FEATURES

CONTACT

SALE



BADERCOLLINS.COM

Ask for Bader - Collins Associates
Berger Realty Inc
3160 Asbury Avenue, Ocean City
Call:
Email to: bca@bergerrealty.com
<http://www.BADERCOLLINS.com>

Scan to see Property page.

