

Berger Realty

Since 1926



Berger Realty, Inc.
3160 Asbury Avenue
Ocean City, NJ 08226
1-877-237-4371 / 609-399-0076
info@bergerrealty.com



4 Loraine Ave, Pleasantville, NJ, 08232

Price \$299,500.00

PROPERTY DETAILS

Total Rooms	
Bedrooms	0
Baths Full	0
Baths Half	0
Year Built	1920
Type	
Block Number	188
Listing #	598159
Taxes	4296.00

COMMENTS

*****PLEASANTVILLE COMMERCIAL WAREHOUSE NEW LISTING ALERT***UEZR ZONING**APPROXIMATELY 2,100 SQ FT OF SPACE**LOADING DOCK**BATHROOM**2 ELECTRIC HEATERS, TRUSS MOUNTED**2 MINI SPLIT AC UNITS**BLOCK WALL CONSTRUCTION**NEWER ROOF** Close to AC, Expressway, Black Horse Pike & much more. Unit is currently rented out month to month @ \$1,850 per month. Loading dock offers**

...

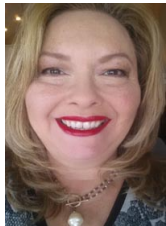
PROPERTY FEATURES

Exterior Stucco	OutsideFeatures Loading Dock Restrooms	ParkingGarage 1 to 5 Spaces	InteriorFeatures Restroom Storage
--------------------	--	--------------------------------	---

Basement Slab	Heating Electric	Cooling Wall Units	Water Public
------------------	---------------------	-----------------------	-----------------

Sewer
Public Sewer

CONTACT



Ask for Theresa Maina
Berger Realty Inc
3160 Asbury Avenue, Ocean City
Call: 609-703-7725
Email to: tam@bergerrealty.com

Scan to see Property page.



Berger Realty

Since 1926



Berger Realty, Inc.
3160 Asbury Avenue
Ocean City, NJ 08226
1-877-237-4371 / 609-399-0076
info@bergerrealty.com



4 Loraine Ave, Pleasantville, NJ, 08232

Price \$299,500.00

PROPERTY DETAILS

Total Rooms	
Bedrooms	0
Baths Full	0
Baths Half	0
Year Built	1920
Type	
Block Number	188
Listing #	598159
Taxes	4296.00

COMMENTS

*****PLEASANTVILLE COMMERCIAL WAREHOUSE NEW LISTING ALERT***UEZR ZONING**APPROXIMATELY 2,100 SQ FT OF SPACE**LOADING DOCK**BATHROOM**2 ELECTRIC HEATERS, TRUSS MOUNTED**2 MINI SPLIT AC UNITS**BLOCK WALL CONSTRUCTION**NEWER ROOF** Close to AC, Expressway, Black Horse Pike & much more. Unit is currently rented out month to month @ \$1,850 per month. Loading dock offers**

...

PROPERTY FEATURES

Exterior Stucco	OutsideFeatures Loading Dock Restrooms	ParkingGarage 1 to 5 Spaces	InteriorFeatures Restroom Storage
--------------------	--	--------------------------------	---

Basement Slab	Heating Electric	Cooling Wall Units	Water Public
------------------	---------------------	-----------------------	-----------------

Sewer
Public Sewer

CONTACT



Ask for Theresa Maina
Berger Realty Inc
3160 Asbury Avenue, Ocean City
Call: 609-703-7725
Email to: tam@bergerrealty.com

Scan to see Property page.

