



Berger Realty, Inc.
3160 Asbury Avenue
Ocean City, NJ 08226
1-877-237-4371 / 609-399-0076
info@bergerrealty.com



3 ATLAS LANE ROAD, Egg Harbor Township, NJ, 08234

Price \$38,000.00

PROPERTY DETAILS



Total Rooms	
Bedrooms	0
Baths Full	0
Baths Half	0
Year Built	
Type	
Block Number	2902
Listing #	598152
Taxes	107.00

COMMENTS

.36 ACRE WOODED RESIDENTIAL LOT WITH 140' FRONTAGE WELL LOCATED IN A PRIVATE SECLUDED AREA NEEDS SEWER EXTENDED TO PROPERTY TO BUILD. INVEST FOR THE FUTURE....

PROPERTY FEATURES

CONTACT



Ask for Evelyn "Evie" Schweibinz
Berger Realty Inc
3160 Asbury Avenue, Ocean City
Call:
Email to: ems@bergerrealty.com

Scan to see Property page.



Berger Realty, Inc.
3160 Asbury Avenue
Ocean City, NJ 08226
1-877-237-4371 / 609-399-0076
info@bergerrealty.com



3 ATLAS LANE ROAD, Egg Harbor Township, NJ, 08234

Price \$38,000.00

PROPERTY DETAILS



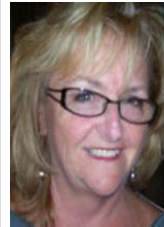
Total Rooms	
Bedrooms	0
Baths Full	0
Baths Half	0
Year Built	
Type	
Block Number	2902
Listing #	598152
Taxes	107.00

COMMENTS

.36 ACRE WOODED RESIDENTIAL LOT WITH 140' FRONTAGE WELL LOCATED IN A PRIVATE SECLUDED AREA NEEDS SEWER EXTENDED TO PROPERTY TO BUILD. INVEST FOR THE FUTURE....

PROPERTY FEATURES

CONTACT



Ask for Evelyn "Evie" Schweibinz
Berger Realty Inc
3160 Asbury Avenue, Ocean City
Call:
Email to: ems@bergerrealty.com

Scan to see Property page.

