

Berger Realty

Since 1926



Berger Realty, Inc.
3160 Asbury Avenue
Ocean City, NJ 08226
1-877-237-4371 / 609-399-0076
info@bergerrealty.com



468 Hands Mill Rd, Dennis Township, NJ, 08270

Price \$1,399,000.00

PROPERTY DETAILS

Total Rooms	0
Bedrooms	0
Baths Full	0
Baths Half	0
Year Built	
Type	
Block Number	14
Listing #	598069
Taxes	1030.00

COMMENTS

?? Welcome to Your Dream Farmstead! ???? Discover the perfect blend of peaceful country living and coastal convenience with this established, fully operational 76-acre farm located in the heart of Belleplain, Dennis Township—just 20 minutes from the beautiful beaches of Cape May County! This incredible property features: A spacious 3-bedroom, 2-bath home A barn (...)

PROPERTY FEATURES

CONTACT



Ask for Sara Varani
Berger Realty Inc
3160 Asbury Avenue, Ocean City
Call:
Email to: sev@bergerrealty.com

Scan to see Property page.



Berger Realty

Since 1926



Berger Realty, Inc.
3160 Asbury Avenue
Ocean City, NJ 08226
1-877-237-4371 / 609-399-0076
info@bergerrealty.com



468 Hands Mill Rd, Dennis Township, NJ, 08270

Price \$1,399,000.00

PROPERTY DETAILS

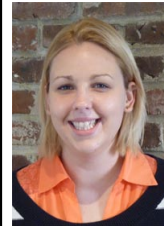
Total Rooms	0
Bedrooms	0
Baths Full	0
Baths Half	0
Year Built	
Type	
Block Number	14
Listing #	598069
Taxes	1030.00

COMMENTS

?? Welcome to Your Dream Farmstead! ???? Discover the perfect blend of peaceful country living and coastal convenience with this established, fully operational 76-acre farm located in the heart of Belleplain, Dennis Township—just 20 minutes from the beautiful beaches of Cape May County! This incredible property features: A spacious 3-bedroom, 2-bath home A barn (...)

PROPERTY FEATURES

CONTACT



Ask for Sara Varani
Berger Realty Inc
3160 Asbury Avenue, Ocean City
Call:
Email to: sev@bergerrealty.com

Scan to see Property page.

