



Berger Realty, Inc.
3160 Asbury Avenue
Ocean City, NJ 08226
1-877-237-4371 / 609-399-0076
info@bergerrealty.com



5410 whitehorse pike, Mullica Township, NJ, 08215

Price \$25,000.00

PROPERTY DETAILS

Total Rooms	
Bedrooms	0
Baths Full	0
Baths Half	0
Year Built	
Type	
Block Number	10302
Listing #	598052
Taxes	2024.00

COMMENTS

Vacant Land for Sale – Prime Location in Mullica, NJ Exceptional investment opportunity! This 9.33-acre parcel is located on a major highway in Mullica, New Jersey, offering excellent visibility and accessibility. Approximately 80% of the land is designated wetlands, making it a potential candidate for Density Transfer, subject to approval by the Pinelands Commission. ...

PROPERTY FEATURES

CONTACT



Ask for Sara Varani
Berger Realty Inc
3160 Asbury Avenue, Ocean City
Call:
Email to: sev@bergerrealty.com

Scan to see Property page.



Berger Realty, Inc.
3160 Asbury Avenue
Ocean City, NJ 08226
1-877-237-4371 / 609-399-0076
info@bergerrealty.com



5410 whitehorse pike, Mullica Township, NJ, 08215

Price \$25,000.00

PROPERTY DETAILS

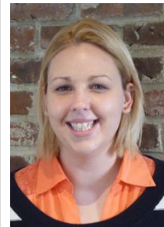
Total Rooms	
Bedrooms	0
Baths Full	0
Baths Half	0
Year Built	
Type	
Block Number	10302
Listing #	598052
Taxes	2024.00

COMMENTS

Vacant Land for Sale – Prime Location in Mullica, NJ Exceptional investment opportunity! This 9.33-acre parcel is located on a major highway in Mullica, New Jersey, offering excellent visibility and accessibility. Approximately 80% of the land is designated wetlands, making it a potential candidate for Density Transfer, subject to approval by the Pinelands Commission. ...

PROPERTY FEATURES

CONTACT



Ask for Sara Varani
Berger Realty Inc
3160 Asbury Avenue, Ocean City
Call:
Email to: sev@bergerrealty.com

Scan to see Property page.

