



Berger Realty, Inc  
1330 Bay Avenue  
Ocean City, NJ 08226  
609-391-1330/609-391-1300  
info@bergerrealty.com



5410 whitehorse pike, Mullica Township, NJ, 08215

Price \$25,000.00



#### PROPERTY DETAILS

Total Rooms	
Bedrooms	0
Baths Full	0
Baths Half	0
Year Built	
Type	
Block Number	10302
Listing #	598052
Taxes	2024.00

#### COMMENTS

*Vacant Land for Sale – Prime Location in Mullica, NJ Exceptional investment opportunity! This 9.33-acre parcel is located on a major highway in Mullica, New Jersey, offering excellent visibility and accessibility. Approximately 80% of the land is designated wetlands, making it a potential candidate for Density Transfer, subject to approval by the Pinelands Commission. ...*

#### PROPERTY FEATURES

#### CONTACT



Ask for Joanne Kelly  
Berger Realty Inc  
1330 Bay Avenue, Ocean City  
Call: 609-425-2106  
Email to: jmk@bergerrealty.com

Scan to see Property page.



Berger Realty, Inc  
1330 Bay Avenue  
Ocean City, NJ 08226  
609-391-1330/609-391-1300  
info@bergerrealty.com



5410 whitehorse pike, Mullica Township, NJ, 08215

Price \$25,000.00



#### PROPERTY DETAILS

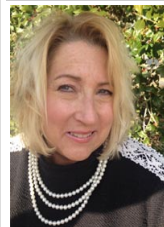
Total Rooms	
Bedrooms	0
Baths Full	0
Baths Half	0
Year Built	
Type	
Block Number	10302
Listing #	598052
Taxes	2024.00

#### COMMENTS

*Vacant Land for Sale – Prime Location in Mullica, NJ Exceptional investment opportunity! This 9.33-acre parcel is located on a major highway in Mullica, New Jersey, offering excellent visibility and accessibility. Approximately 80% of the land is designated wetlands, making it a potential candidate for Density Transfer, subject to approval by the Pinelands Commission. ...*

#### PROPERTY FEATURES

#### CONTACT



Ask for Joanne Kelly  
Berger Realty Inc  
1330 Bay Avenue, Ocean City  
Call: 609-425-2106  
Email to: jmk@bergerrealty.com

Scan to see Property page.

