



Berger Realty, Inc.  
3160 Asbury Avenue  
Ocean City, NJ 08226  
1-877-237-4371 / 609-399-0076  
info@bergerrealty.com



1123 Atlantic Ave, Egg Harbor City, NJ, 08215

Price \$329,995.00



#### PROPERTY DETAILS

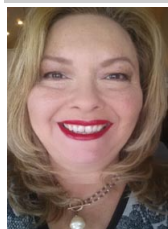
Total Rooms	
Bedrooms	0
Baths Full	0
Baths Half	0
Year Built	1956
Type	
Block Number	527
Listing #	598022
Taxes	2741.00

#### COMMENTS

*Spacious warehouse with a new roof, windows, bathroom, and huge new chain link fence storage yard. Freshly painted interior and exterior ready to be outfitted to suit your needs. All utilities are ready to go. The property also has a large shed and exterior concrete slab which are very useful. Seller is listed to sell but would entertain offers to lease. Almost 3000 Sqft o...*

#### PROPERTY FEATURES

#### CONTACT



Ask for Theresa Maina  
Berger Realty Inc  
3160 Asbury Avenue, Ocean City  
Call: 609-703-7725  
Email to: tam@bergerrealty.com

Scan to see Property page.



Berger Realty, Inc.  
3160 Asbury Avenue  
Ocean City, NJ 08226  
1-877-237-4371 / 609-399-0076  
info@bergerrealty.com



1123 Atlantic Ave, Egg Harbor City, NJ, 08215

Price \$329,995.00



#### PROPERTY DETAILS

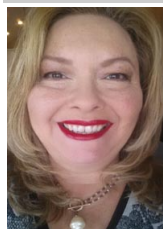
Total Rooms	
Bedrooms	0
Baths Full	0
Baths Half	0
Year Built	1956
Type	
Block Number	527
Listing #	598022
Taxes	2741.00

#### COMMENTS

*Spacious warehouse with a new roof, windows, bathroom, and huge new chain link fence storage yard. Freshly painted interior and exterior ready to be outfitted to suit your needs. All utilities are ready to go. The property also has a large shed and exterior concrete slab which are very useful. Seller is listed to sell but would entertain offers to lease. Almost 3000 Sqft o...*

#### PROPERTY FEATURES

#### CONTACT



Ask for Theresa Maina  
Berger Realty Inc  
3160 Asbury Avenue, Ocean City  
Call: 609-703-7725  
Email to: tam@bergerrealty.com

Scan to see Property page.

