

Berger Realty

Since 1926



Berger Realty, Inc.
3160 Asbury Avenue
Ocean City, NJ 08226
1-877-237-4371 / 609-399-0076
info@bergerrealty.com



300 Dudley, Ventnor, NJ, 08406

Price \$999,000.00



PROPERTY DETAILS

Total Rooms	
Bedrooms	0
Baths Full	0
Baths Half	0
Year Built	
Type	
Block Number	8
Listing #	598017
Taxes	10.00

COMMENTS

Nestled in the heart of Ventnor Heights, this unique property sits on a beautiful 50x80 corner lot, offering a rare blend of character, space, and location. Formerly a church and now operating as a Chapel and a youth center, the building retains its charm while offering versatile potential for future use. Situated directly next to a local supermarket and surrounded by a vi...

PROPERTY FEATURES

CONTACT



Ask for Frank Shoemaker
Berger Realty Inc
3160 Asbury Avenue, Ocean City
Call:
Email to: fcs@bergerrealty.com

Scan to see Property page.



Berger Realty

Since 1926

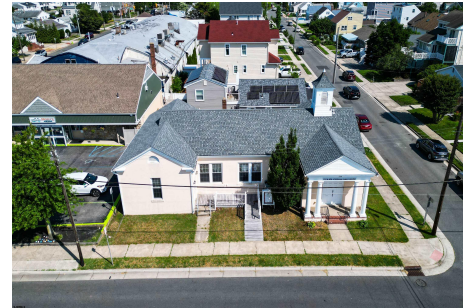


Berger Realty, Inc.
3160 Asbury Avenue
Ocean City, NJ 08226
1-877-237-4371 / 609-399-0076
info@bergerrealty.com



300 Dudley, Ventnor, NJ, 08406

Price \$999,000.00



PROPERTY DETAILS

Total Rooms	
Bedrooms	0
Baths Full	0
Baths Half	0
Year Built	
Type	
Block Number	8
Listing #	598017
Taxes	10.00

COMMENTS

Nestled in the heart of Ventnor Heights, this unique property sits on a beautiful 50x80 corner lot, offering a rare blend of character, space, and location. Formerly a church and now operating as a Chapel and a youth center, the building retains its charm while offering versatile potential for future use. Situated directly next to a local supermarket and surrounded by a vi...

PROPERTY FEATURES

CONTACT



Ask for Frank Shoemaker
Berger Realty Inc
3160 Asbury Avenue, Ocean City
Call:
Email to: fcs@bergerrealty.com

Scan to see Property page.

