



Berger Realty, Inc
1330 Bay Avenue
Ocean City, NJ 08226
609-391-1330/609-391-1300
info@bergerrealty.com



420 Philadelphia Ave, Egg Harbor City, NJ, 08215

Price \$329,000.00



PROPERTY DETAILS

| | |
|--------------|---------------|
| Total Rooms | 8 |
| Bedrooms | 3 |
| Baths Full | 1 |
| Baths Half | 1 |
| Year Built | 1940 |
| Type | Single Family |
| Block Number | 315 |
| Listing # | 597901 |
| Taxes | 6139.00 |

COMMENTS

Beautifully renovated home at 420 Philadelphia Ave in Egg Harbor City! This move-in ready gem features brand new flooring throughout, fresh sheetrock, stylish new trim, and all new doors. The home is upgraded with brand new electric and a brand new HVAC system for year-round comfort and efficiency. Enjoy cooking in the stunning new kitchen complete with modern finishes and...

PROPERTY FEATURES

| | | | |
|-----------------|---------------|--------------|-------------|
| OutsideFeatures | ParkingGarage | Basement | Heating |
| Porch | None | Unfinished | Gas-Natural |
| Cooling | Water | Sewer | |
| Central | Public | Public Sewer | |

CONTACT

Ask for Donna M. Drohan
Berger Realty Inc
1330 Bay Avenue, Ocean City
Call:
Email to: dmd@bergerrealty.com

Scan to see Property page.

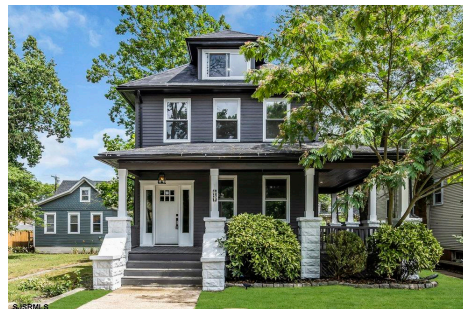


Berger Realty, Inc
1330 Bay Avenue
Ocean City, NJ 08226
609-391-1330/609-391-1300
info@bergerrealty.com



420 Philadelphia Ave, Egg Harbor City, NJ, 08215

Price \$329,000.00



PROPERTY DETAILS

| | |
|--------------|---------------|
| Total Rooms | 8 |
| Bedrooms | 3 |
| Baths Full | 1 |
| Baths Half | 1 |
| Year Built | 1940 |
| Type | Single Family |
| Block Number | 315 |
| Listing # | 597901 |
| Taxes | 6139.00 |

COMMENTS

Beautifully renovated home at 420 Philadelphia Ave in Egg Harbor City! This move-in ready gem features brand new flooring throughout, fresh sheetrock, stylish new trim, and all new doors. The home is upgraded with brand new electric and a brand new HVAC system for year-round comfort and efficiency. Enjoy cooking in the stunning new kitchen complete with modern finishes and...

PROPERTY FEATURES

| | | | |
|-----------------|---------------|--------------|-------------|
| OutsideFeatures | ParkingGarage | Basement | Heating |
| Porch | None | Unfinished | Gas-Natural |
| Cooling | Water | Sewer | |
| Central | Public | Public Sewer | |

CONTACT

Ask for Donna M. Drohan
Berger Realty Inc
1330 Bay Avenue, Ocean City
Call:
Email to: dmd@bergerrealty.com

Scan to see Property page.

