

# Berger Realty

Since 1926

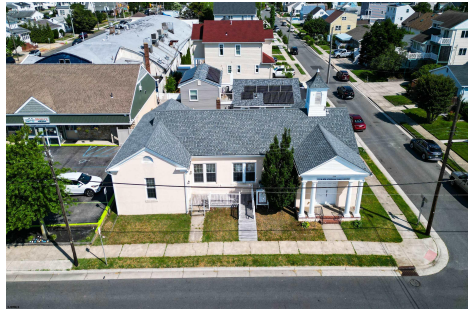


Berger Realty, Inc.  
3160 Asbury Avenue  
Ocean City, NJ 08226  
1-877-237-4371 / 609-399-0076  
info@bergerrealty.com



300 Dudley, Ventnor, NJ, 08406

Price \$999,000.00



## PROPERTY DETAILS

Total Rooms	5
Bedrooms	0
Baths Full	0
Baths Half	2
Year Built	
Type	Single Family
Block Number	8
Listing #	597841
Taxes	10.00

## COMMENTS

*Nestled in the heart of Ventnor Heights, this unique property sits on a beautiful 50x80 corner lot, offering a rare blend of character, space, and location. Formerly a church and now operating as a Chapel and a youth center, the building retains its charm while offering versatile potential for future use. Situated directly next to a local supermarket and surrounded by a vi...*

## PROPERTY FEATURES

ParkingGarage	Heating	Water	Sewer
None	Forced Air	Public	Public Sewer
	Gas-Natural		

## CONTACT



Ask for Joyce McMahon  
Berger Realty Inc  
3160 Asbury Avenue, Ocean City  
Call:  
Email to: [jmm@bergerrealty.com](mailto:jmm@bergerrealty.com)

Scan to see Property page.



# Berger Realty

Since 1926

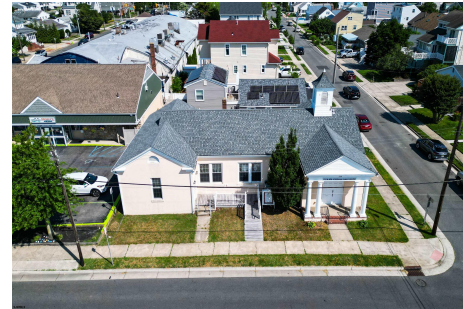


Berger Realty, Inc.  
3160 Asbury Avenue  
Ocean City, NJ 08226  
1-877-237-4371 / 609-399-0076  
info@bergerrealty.com



300 Dudley, Ventnor, NJ, 08406

Price \$999,000.00



## PROPERTY DETAILS

Total Rooms	5
Bedrooms	0
Baths Full	0
Baths Half	2
Year Built	
Type	Single Family
Block Number	8
Listing #	597841
Taxes	10.00

## COMMENTS

*Nestled in the heart of Ventnor Heights, this unique property sits on a beautiful 50x80 corner lot, offering a rare blend of character, space, and location. Formerly a church and now operating as a Chapel and a youth center, the building retains its charm while offering versatile potential for future use. Situated directly next to a local supermarket and surrounded by a vi...*

## PROPERTY FEATURES

ParkingGarage	Heating	Water	Sewer
None	Forced Air	Public	Public Sewer
	Gas-Natural		

## CONTACT



Ask for Joyce McMahon  
Berger Realty Inc  
3160 Asbury Avenue, Ocean City  
Call:  
Email to: [jmm@bergerrealty.com](mailto:jmm@bergerrealty.com)

Scan to see Property page.

