



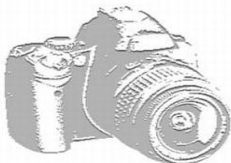
Berger Realty, Inc.  
3160 Asbury Avenue  
Ocean City, NJ 08226  
1-877-237-4371 / 609-399-0076  
info@bergerrealty.com



335 Steelmanville, Egg Harbor Township, NJ, 08234

Price \$280,000.00

PHOTO NOT AVAILABLE



#### PROPERTY DETAILS

Total Rooms	
Bedrooms	0
Baths Full	0
Baths Half	0
Year Built	
Type	
Block Number	7001
Listing #	597813
Taxes	4068.00

#### COMMENTS

56.19 acres adjacent to the Harbor Pines golf course, and Harbor Acres a upscale housing development. The parcel contains 1,544 frontage along Steelmanville Road and a large section abuts the golf course with excellent views. Potential for development into large estate type lots, however R-2 Residential Zoning District requires 30,000 Square feet and 100 feet of frontage t...

#### PROPERTY FEATURES

#### CONTACT



Ask for Margarita Kobilianets  
Berger Realty Inc  
3160 Asbury Avenue, Ocean City  
Call: 609-674-3417  
Email to: mak@bergerrealty.com

Scan to see Property page.



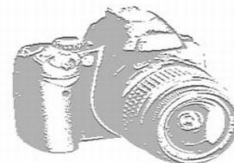
Berger Realty, Inc.  
3160 Asbury Avenue  
Ocean City, NJ 08226  
1-877-237-4371 / 609-399-0076  
info@bergerrealty.com



335 Steelmanville, Egg Harbor Township, NJ, 08234

Price \$280,000.00

PHOTO NOT AVAILABLE



#### PROPERTY DETAILS

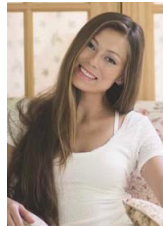
Total Rooms	
Bedrooms	0
Baths Full	0
Baths Half	0
Year Built	
Type	
Block Number	7001
Listing #	597813
Taxes	4068.00

#### COMMENTS

56.19 acres adjacent to the Harbor Pines golf course, and Harbor Acres a upscale housing development. The parcel contains 1,544 frontage along Steelmanville Road and a large section abuts the golf course with excellent views. Potential for development into large estate type lots, however R-2 Residential Zoning District requires 30,000 Square feet and 100 feet of frontage t...

#### PROPERTY FEATURES

#### CONTACT



Ask for Margarita Kobilianets  
Berger Realty Inc  
3160 Asbury Avenue, Ocean City  
Call: 609-674-3417  
Email to: mak@bergerrealty.com

Scan to see Property page.

