



Berger Realty, Inc
1330 Bay Avenue
Ocean City, NJ 08226
609-391-1330/609-391-1300
info@bergerrealty.com



335 Steelmanville, Egg Harbor Township, NJ, 08234

Price \$280,000.00

PHOTO NOT AVAILABLE



PROPERTY DETAILS

Total Rooms	
Bedrooms	0
Baths Full	0
Baths Half	0
Year Built	
Type	
Block Number	7001
Listing #	597813
Taxes	4068.00

COMMENTS

56.19 acres adjacent to the Harbor Pines golf course, and Harbor Acres a upscale housing development. The parcel contains 1,544 frontage along Steelmanville Road and a large section abuts the golf course with excellent views. Potential for development into large estate type lots, however R-2 Residential Zoning District requires 30,000 Square feet and 100 feet of frontage t...

PROPERTY FEATURES

CONTACT



Ask for Joanne Kelly
Berger Realty Inc
1330 Bay Avenue, Ocean City
Call: 609-425-2106
Email to: jmk@bergerrealty.com

Scan to see Property page.



Berger Realty, Inc
1330 Bay Avenue
Ocean City, NJ 08226
609-391-1330/609-391-1300
info@bergerrealty.com



335 Steelmanville, Egg Harbor Township, NJ, 08234

Price \$280,000.00

PHOTO NOT AVAILABLE



PROPERTY DETAILS

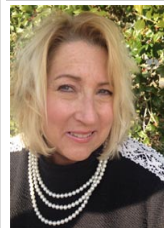
Total Rooms	
Bedrooms	0
Baths Full	0
Baths Half	0
Year Built	
Type	
Block Number	7001
Listing #	597813
Taxes	4068.00

COMMENTS

56.19 acres adjacent to the Harbor Pines golf course, and Harbor Acres a upscale housing development. The parcel contains 1,544 frontage along Steelmanville Road and a large section abuts the golf course with excellent views. Potential for development into large estate type lots, however R-2 Residential Zoning District requires 30,000 Square feet and 100 feet of frontage t...

PROPERTY FEATURES

CONTACT



Ask for Joanne Kelly
Berger Realty Inc
1330 Bay Avenue, Ocean City
Call: 609-425-2106
Email to: jmk@bergerrealty.com

Scan to see Property page.

