

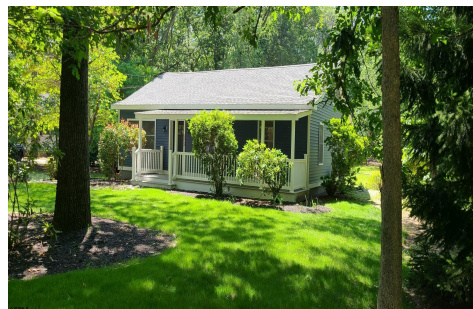


Berger Realty, Inc.
3160 Asbury Avenue
Ocean City, NJ 08226
1-877-237-4371 / 609-399-0076
info@bergerrealty.com



2323 Columbia, Mays Landing, NJ, 08330

Price \$385,000.00



PROPERTY DETAILS

Total Rooms	6
Bedrooms	3
Baths Full	1
Baths Half	1
Year Built	
Type	Single Family
Block Number	846
Listing #	597679
Taxes	4316.00

COMMENTS

This home is located on quite street. Completely renovated sitting on 1.1 acres of privacy. Open floor plan with laundry room and unfinished basement. Stop at our open house Sat 28 th 10-12...

PROPERTY FEATURES

Exterior Vinyl	OutsideFeatures Patio Porch	ParkingGarage None	OtherRooms Laundry/Utility Room Storage Attic
AppliancesIncluded Dishwasher Gas Stove Refrigerator	Basement Unfinished	Heating Forced Air Gas-Natural	Cooling Central
HotWater Gas	Water Well	Sewer Septic	

CONTACT



Ask for Dori Adams
Berger Realty Inc
3160 Asbury Avenue, Ocean City
Call: 609-602-2545
Email to: doa@bergerrealty.com

Scan to see Property page.



Berger Realty, Inc.
3160 Asbury Avenue
Ocean City, NJ 08226
1-877-237-4371 / 609-399-0076
info@bergerrealty.com



2323 Columbia, Mays Landing, NJ, 08330

Price \$385,000.00



PROPERTY DETAILS

Total Rooms	6
Bedrooms	3
Baths Full	1
Baths Half	1
Year Built	
Type	Single Family
Block Number	846
Listing #	597679
Taxes	4316.00

COMMENTS

This home is located on quite street. Completely renovated sitting on 1.1 acres of privacy. Open floor plan with laundry room and unfinished basement. Stop at our open house Sat 28 th 10-12...

PROPERTY FEATURES

Exterior Vinyl	OutsideFeatures Patio Porch	ParkingGarage None	OtherRooms Laundry/Utility Room Storage Attic
AppliancesIncluded Dishwasher Gas Stove Refrigerator	Basement Unfinished	Heating Forced Air Gas-Natural	Cooling Central
HotWater Gas	Water Well	Sewer Septic	

CONTACT



Ask for Dori Adams
Berger Realty Inc
3160 Asbury Avenue, Ocean City
Call: 609-602-2545
Email to: doa@bergerrealty.com

Scan to see Property page.

