



Berger Realty, Inc.
3160 Asbury Avenue
Ocean City, NJ 08226
1-877-237-4371 / 609-399-0076
info@bergerrealty.com



Harding, Mays Landing, NJ, 08330

Price \$100,000.00



PROPERTY DETAILS

Total Rooms	
Bedrooms	0
Baths Full	0
Baths Half	0
Year Built	
Type	
Block Number	529
Listing #	597638
Taxes	2072.00

COMMENTS

Incredible opportunity to own over 10 acres of versatile land with road frontage along the well-traveled Harding Highway (Route 40) in sought-after Mays Landing. Whether you're envisioning a private estate, agricultural use, or exploring development possibilities (subject to zoning), this expansive parcel offers endless potential. Enjoy the best of both worlds—peaceful,...

PROPERTY FEATURES

CONTACT



Ask for J.K. Hepner, III
Berger Realty Inc
3160 Asbury Avenue, Ocean City
Call: 609-457-9457
Email to: jkh@bergerrealty.com

Scan to see Property page.

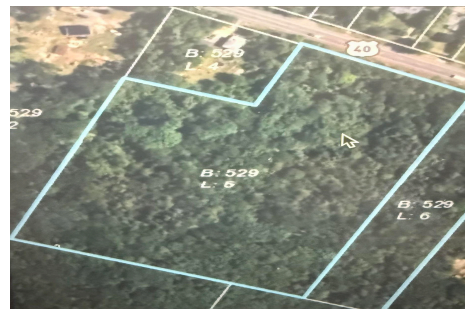


Berger Realty, Inc.
3160 Asbury Avenue
Ocean City, NJ 08226
1-877-237-4371 / 609-399-0076
info@bergerrealty.com



Harding, Mays Landing, NJ, 08330

Price \$100,000.00



PROPERTY DETAILS

Total Rooms	
Bedrooms	0
Baths Full	0
Baths Half	0
Year Built	
Type	
Block Number	529
Listing #	597638
Taxes	2072.00

COMMENTS

Incredible opportunity to own over 10 acres of versatile land with road frontage along the well-traveled Harding Highway (Route 40) in sought-after Mays Landing. Whether you're envisioning a private estate, agricultural use, or exploring development possibilities (subject to zoning), this expansive parcel offers endless potential. Enjoy the best of both worlds—peaceful,...

PROPERTY FEATURES

CONTACT



Ask for J.K. Hepner, III
Berger Realty Inc
3160 Asbury Avenue, Ocean City
Call: 609-457-9457
Email to: jkh@bergerrealty.com

Scan to see Property page.

