



Berger Realty, Inc.  
3160 Asbury Avenue  
Ocean City, NJ 08226  
1-877-237-4371 / 609-399-0076  
info@bergerrealty.com



Harding, Mays Landing, NJ, 08330

Price \$100,000.00



#### PROPERTY DETAILS

Total Rooms	
Bedrooms	0
Baths Full	0
Baths Half	0
Year Built	
Type	
Block Number	529
Listing #	597638
Taxes	2072.00

#### COMMENTS

*Incredible opportunity to own over 10 acres of versatile land with road frontage along the well-traveled Harding Highway (Route 40) in sought-after Mays Landing. Whether you're envisioning a private estate, agricultural use, or exploring development possibilities (subject to zoning), this expansive parcel offers endless potential. Enjoy the best of both worlds—peaceful,...*

#### PROPERTY FEATURES

#### CONTACT

Berger Realty Inc  
3160 Asbury Ave.  
Ocean City, NJ 08226  
Call: (609) 399-0076  
Email to: info@bergerrealty.com  
Web: www.bergerrealty.com

Scan to see Property page.

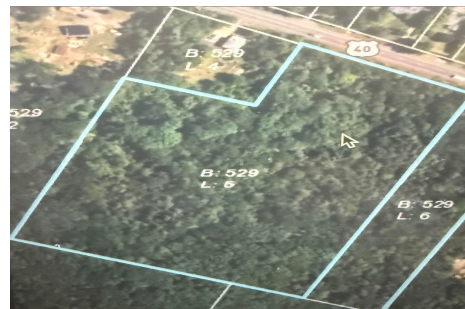


Berger Realty, Inc.  
3160 Asbury Avenue  
Ocean City, NJ 08226  
1-877-237-4371 / 609-399-0076  
info@bergerrealty.com



Harding, Mays Landing, NJ, 08330

Price \$100,000.00



#### PROPERTY DETAILS

Total Rooms	
Bedrooms	0
Baths Full	0
Baths Half	0
Year Built	
Type	
Block Number	529
Listing #	597638
Taxes	2072.00

#### COMMENTS

*Incredible opportunity to own over 10 acres of versatile land with road frontage along the well-traveled Harding Highway (Route 40) in sought-after Mays Landing. Whether you're envisioning a private estate, agricultural use, or exploring development possibilities (subject to zoning), this expansive parcel offers endless potential. Enjoy the best of both worlds—peaceful,...*

#### PROPERTY FEATURES

#### CONTACT

Berger Realty Inc  
3160 Asbury Ave.  
Ocean City, NJ 08226  
Call: (609) 399-0076  
Email to: info@bergerrealty.com  
Web: www.bergerrealty.com

Scan to see Property page.

