



Berger Realty, Inc.  
3160 Asbury Avenue  
Ocean City, NJ 08226  
1-877-237-4371 / 609-399-0076  
info@bergerrealty.com



Cape May, Mays Landing, NJ, 08330

Price \$95,000.00



#### PROPERTY DETAILS

Total Rooms	
Bedrooms	0
Baths Full	0
Baths Half	0
Year Built	
Type	
Block Number	626
Listing #	597607
Taxes	992.00

#### COMMENTS

*Buyer is responsible to do their own due diligence as Seller has owned this property for a very long time and makes no warranties if it is considered buildable. If land is considered buildable, it is the responsibility of the buyer to obtain any/all certifications/surveys etc....*

#### PROPERTY FEATURES

#### CONTACT



Ask for Evelyn "Evie" Schweibinz  
Berger Realty Inc  
3160 Asbury Avenue, Ocean City  
Call:  
Email to: [ems@bergerrealty.com](mailto:ems@bergerrealty.com)

Scan to see Property page.



Berger Realty, Inc.  
3160 Asbury Avenue  
Ocean City, NJ 08226  
1-877-237-4371 / 609-399-0076  
info@bergerrealty.com



Cape May, Mays Landing, NJ, 08330

Price \$95,000.00



#### PROPERTY DETAILS

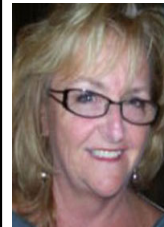
Total Rooms	
Bedrooms	0
Baths Full	0
Baths Half	0
Year Built	
Type	
Block Number	626
Listing #	597607
Taxes	992.00

#### COMMENTS

*Buyer is responsible to do their own due diligence as Seller has owned this property for a very long time and makes no warranties if it is considered buildable. If land is considered buildable, it is the responsibility of the buyer to obtain any/all certifications/surveys etc....*

#### PROPERTY FEATURES

#### CONTACT



Ask for Evelyn "Evie" Schweibinz  
Berger Realty Inc  
3160 Asbury Avenue, Ocean City  
Call:  
Email to: [ems@bergerrealty.com](mailto:ems@bergerrealty.com)

Scan to see Property page.

