

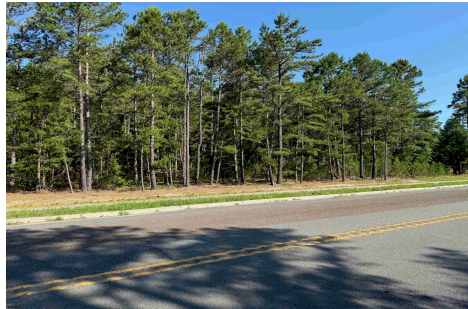


Berger Realty, Inc.  
3160 Asbury Avenue  
Ocean City, NJ 08226  
1-877-237-4371 / 609-399-0076  
info@bergerrealty.com



3015 Ridge, Egg Harbor Township, NJ, 08234

Price \$90,000.00



#### PROPERTY DETAILS

Total Rooms	
Bedrooms	0
Baths Full	0
Baths Half	0
Year Built	
Type	
Block Number	1807
Listing #	597546
Taxes	1087.00

#### COMMENTS

*This lot was part of a subdivision and has Pinelands Approval, Sidewalks and Curbs, Sewer and Water in the street. You need a building permit....*

#### PROPERTY FEATURES

#### CONTACT

Berger Realty Inc  
3160 Asbury Ave.  
Ocean City, NJ 08226  
Call: (609) 399-0076  
Email to: info@bergerrealty.com  
Web: www.bergerrealty.com

Scan to see Property page.

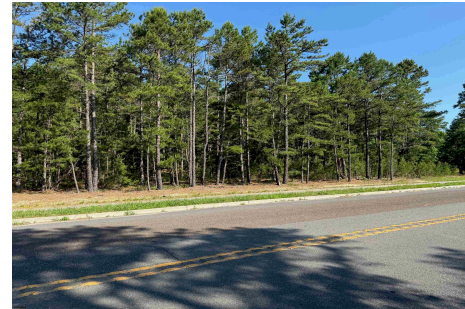


Berger Realty, Inc.  
3160 Asbury Avenue  
Ocean City, NJ 08226  
1-877-237-4371 / 609-399-0076  
info@bergerrealty.com



3015 Ridge, Egg Harbor Township, NJ, 08234

Price \$90,000.00



#### PROPERTY DETAILS

Total Rooms	
Bedrooms	0
Baths Full	0
Baths Half	0
Year Built	
Type	
Block Number	1807
Listing #	597546
Taxes	1087.00

#### COMMENTS

*This lot was part of a subdivision and has Pinelands Approval, Sidewalks and Curbs, Sewer and Water in the street. You need a building permit....*

#### PROPERTY FEATURES

#### CONTACT

Berger Realty Inc  
3160 Asbury Ave.  
Ocean City, NJ 08226  
Call: (609) 399-0076  
Email to: info@bergerrealty.com  
Web: www.bergerrealty.com

Scan to see Property page.

