

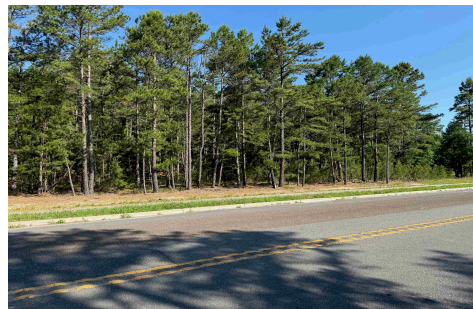


Berger Realty, Inc  
1330 Bay Avenue  
Ocean City, NJ 08226  
609-391-1330/609-391-1300  
info@bergerrealty.com



3015 Ridge, Egg Harbor Township, NJ, 08234

Price \$90,000.00



#### PROPERTY DETAILS

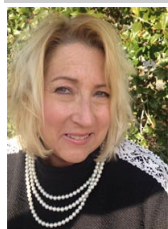
|              |         |
|--------------|---------|
| Total Rooms  |         |
| Bedrooms     | 0       |
| Baths Full   | 0       |
| Baths Half   | 0       |
| Year Built   |         |
| Type         |         |
| Block Number | 1807    |
| Listing #    | 597546  |
| Taxes        | 1087.00 |

#### COMMENTS

*This lot was part of a subdivision and has Pinelands Approval, Sidewalks and Curbs, Sewer and Water in the street. You need a building permit....*

#### PROPERTY FEATURES

#### CONTACT



Ask for Joanne Kelly  
Berger Realty Inc  
1330 Bay Avenue, Ocean City  
Call: 609-425-2106  
Email to: jmk@bergerrealty.com

Scan to see Property page.

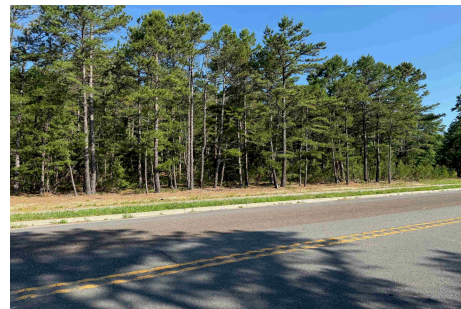


Berger Realty, Inc  
1330 Bay Avenue  
Ocean City, NJ 08226  
609-391-1330/609-391-1300  
info@bergerrealty.com



3015 Ridge, Egg Harbor Township, NJ, 08234

Price \$90,000.00



#### PROPERTY DETAILS

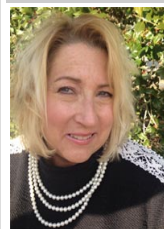
|              |         |
|--------------|---------|
| Total Rooms  |         |
| Bedrooms     | 0       |
| Baths Full   | 0       |
| Baths Half   | 0       |
| Year Built   |         |
| Type         |         |
| Block Number | 1807    |
| Listing #    | 597546  |
| Taxes        | 1087.00 |

#### COMMENTS

*This lot was part of a subdivision and has Pinelands Approval, Sidewalks and Curbs, Sewer and Water in the street. You need a building permit....*

#### PROPERTY FEATURES

#### CONTACT



Ask for Joanne Kelly  
Berger Realty Inc  
1330 Bay Avenue, Ocean City  
Call: 609-425-2106  
Email to: jmk@bergerrealty.com

Scan to see Property page.

