

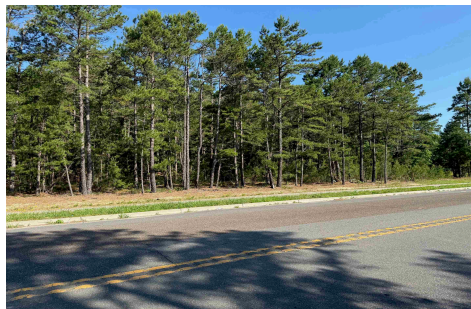


Berger Realty, Inc.
3160 Asbury Avenue
Ocean City, NJ 08226
1-877-237-4371 / 609-399-0076
info@bergerrealty.com



3015 Ridge, Egg Harbor Township, NJ, 08234

Price \$90,000.00



PROPERTY DETAILS

Total Rooms	
Bedrooms	0
Baths Full	0
Baths Half	0
Year Built	
Type	
Block Number	1807
Listing #	597546
Taxes	1087.00

COMMENTS

This lot was part of a subdivision and has Pinelands Approval, Sidewalks and Curbs, Sewer and Water in the street. You need a building permit....

PROPERTY FEATURES

CONTACT



Ask for Domenic Ballerini
Berger Realty Inc
3160 Asbury Avenue, Ocean City
Call: 856-524-8122
Email to: dvb@bergerrealty.com

Scan to see Property page.

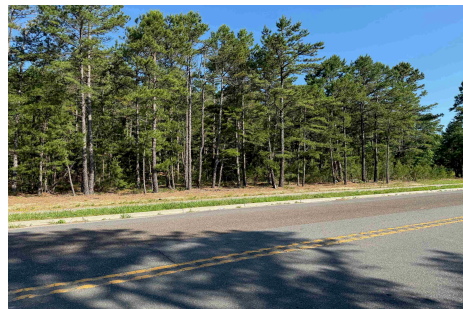


Berger Realty, Inc.
3160 Asbury Avenue
Ocean City, NJ 08226
1-877-237-4371 / 609-399-0076
info@bergerrealty.com



3015 Ridge, Egg Harbor Township, NJ, 08234

Price \$90,000.00



PROPERTY DETAILS

Total Rooms	
Bedrooms	0
Baths Full	0
Baths Half	0
Year Built	
Type	
Block Number	1807
Listing #	597546
Taxes	1087.00

COMMENTS

This lot was part of a subdivision and has Pinelands Approval, Sidewalks and Curbs, Sewer and Water in the street. You need a building permit....

PROPERTY FEATURES

CONTACT



Ask for Domenic Ballerini
Berger Realty Inc
3160 Asbury Avenue, Ocean City
Call: 856-524-8122
Email to: dvb@bergerrealty.com

Scan to see Property page.

