



Berger Realty, Inc.
3160 Asbury Avenue
Ocean City, NJ 08226
1-877-237-4371 / 609-399-0076
info@bergerrealty.com



2731 Mimosa, 2731, Mays Landing, NJ, 08330

Price \$164,000.00



PROPERTY DETAILS

Total Rooms	4
Bedrooms	1
Baths Full	1
Baths Half	0
Year Built	1986
Type	Condo
Block Number	1135.18
Listing #	597422
Taxes	1352.00

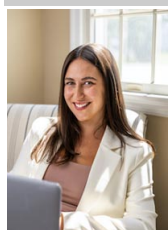
COMMENTS

The Woodlands - 1st floor unit with no one living above you. Open floorplan, cathedral ceilings, end unit. Kitchen has granite countertops. Currently tenant occupied on month to month lease. Please allow 48 hours notice when making appointments....

PROPERTY FEATURES

Exterior Vinyl	ParkingGarage None	OtherRooms Dining Area	Heating Electric Forced Air
Cooling Central	HotWater Electric	Water Public Water	Sewer Public Sewer

CONTACT



Ask for Lauren Greiner
Berger Realty Inc
3160 Asbury Avenue, Ocean City
Call: 609-602-5960
Email to: lmg@bergerrealty.com

Scan to see Property page.



Berger Realty, Inc.
3160 Asbury Avenue
Ocean City, NJ 08226
1-877-237-4371 / 609-399-0076
info@bergerrealty.com



2731 Mimosa, 2731, Mays Landing, NJ, 08330

Price \$164,000.00



PROPERTY DETAILS

Total Rooms	4
Bedrooms	1
Baths Full	1
Baths Half	0
Year Built	1986
Type	Condo
Block Number	1135.18
Listing #	597422
Taxes	1352.00

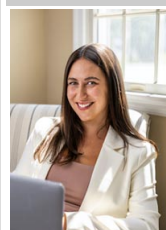
COMMENTS

The Woodlands - 1st floor unit with no one living above you. Open floorplan, cathedral ceilings, end unit. Kitchen has granite countertops. Currently tenant occupied on month to month lease. Please allow 48 hours notice when making appointments....

PROPERTY FEATURES

Exterior Vinyl	ParkingGarage None	OtherRooms Dining Area	Heating Electric Forced Air
Cooling Central	HotWater Electric	Water Public Water	Sewer Public Sewer

CONTACT



Ask for Lauren Greiner
Berger Realty Inc
3160 Asbury Avenue, Ocean City
Call: 609-602-5960
Email to: lmg@bergerrealty.com

Scan to see Property page.

