

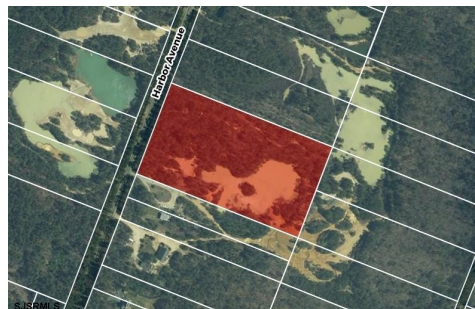


Berger Realty, Inc.  
3160 Asbury Avenue  
Ocean City, NJ 08226  
1-877-237-4371 / 609-399-0076  
info@bergerrealty.com



Harbor, Mays Landing, NJ, 08330

Price \$100,000.00



#### PROPERTY DETAILS

|              |         |
|--------------|---------|
| Total Rooms  |         |
| Bedrooms     | 0       |
| Baths Full   | 0       |
| Baths Half   | 0       |
| Year Built   |         |
| Type         |         |
| Block Number | 1303    |
| Listing #    | 597177  |
| Taxes        | 1009.00 |

#### COMMENTS

*Build your dream home on this vacant 9.72 acre lot. This property is being sold from an estate. All surveys and approvals are the responsibility of the buyer....*

#### PROPERTY FEATURES

#### CONTACT



Ask for Patricia (Trish) Spengler  
Berger Realty Inc  
3160 Asbury Avenue, Ocean City  
Call: 609-425-9254  
Email to: pjs@bergerrealty.com

Scan to see Property page.



Berger Realty, Inc.  
3160 Asbury Avenue  
Ocean City, NJ 08226  
1-877-237-4371 / 609-399-0076  
info@bergerrealty.com



Harbor, Mays Landing, NJ, 08330

Price \$100,000.00



#### PROPERTY DETAILS

|              |         |
|--------------|---------|
| Total Rooms  |         |
| Bedrooms     | 0       |
| Baths Full   | 0       |
| Baths Half   | 0       |
| Year Built   |         |
| Type         |         |
| Block Number | 1303    |
| Listing #    | 597177  |
| Taxes        | 1009.00 |

#### COMMENTS

*Build your dream home on this vacant 9.72 acre lot. This property is being sold from an estate. All surveys and approvals are the responsibility of the buyer....*

#### PROPERTY FEATURES

#### CONTACT



Ask for Patricia (Trish) Spengler  
Berger Realty Inc  
3160 Asbury Avenue, Ocean City  
Call: 609-425-9254  
Email to: pjs@bergerrealty.com

Scan to see Property page.

