

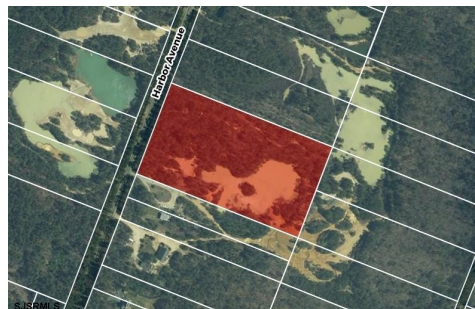


Berger Realty, Inc.
3160 Asbury Avenue
Ocean City, NJ 08226
1-877-237-4371 / 609-399-0076
info@bergerrealty.com



Harbor, Mays Landing, NJ, 08330

Price \$100,000.00



PROPERTY DETAILS

Total Rooms	
Bedrooms	0
Baths Full	0
Baths Half	0
Year Built	
Type	
Block Number	1303
Listing #	597177
Taxes	1009.00

COMMENTS

Build your dream home on this vacant 9.72 acre lot. This property is being sold from an estate. All surveys and approvals are the responsibility of the buyer....

PROPERTY FEATURES

CONTACT



Ask for Joe Young
Berger Realty Inc
3160 Asbury Avenue, Ocean City
Call:
Email to: jty@bergerrealty.com

Scan to see Property page.

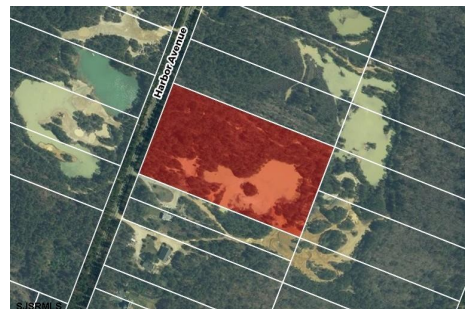


Berger Realty, Inc.
3160 Asbury Avenue
Ocean City, NJ 08226
1-877-237-4371 / 609-399-0076
info@bergerrealty.com



Harbor, Mays Landing, NJ, 08330

Price \$100,000.00



PROPERTY DETAILS

Total Rooms	
Bedrooms	0
Baths Full	0
Baths Half	0
Year Built	
Type	
Block Number	1303
Listing #	597177
Taxes	1009.00

COMMENTS

Build your dream home on this vacant 9.72 acre lot. This property is being sold from an estate. All surveys and approvals are the responsibility of the buyer....

PROPERTY FEATURES

CONTACT



Ask for Joe Young
Berger Realty Inc
3160 Asbury Avenue, Ocean City
Call:
Email to: jty@bergerrealty.com

Scan to see Property page.

