

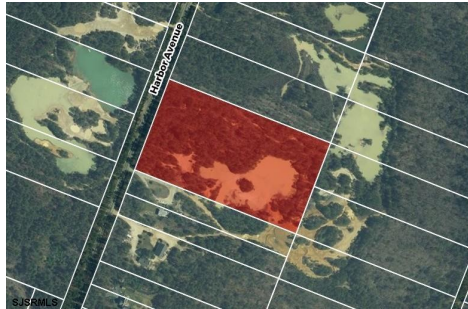


Berger Realty, Inc.  
3160 Asbury Avenue  
Ocean City, NJ 08226  
1-877-237-4371 / 609-399-0076  
info@bergerrealty.com



Harbor, Mays Landing, NJ, 08330

Price \$100,000.00



#### PROPERTY DETAILS

Total Rooms	
Bedrooms	0
Baths Full	0
Baths Half	0
Year Built	
Type	
Block Number	1303
Listing #	597177
Taxes	1009.00

#### COMMENTS

*Build your dream home on this vacant 9.72 acre lot. This property is being sold from an estate. All surveys and approvals are the responsibility of the buyer....*

#### PROPERTY FEATURES

#### CONTACT



Ask for Frank Shoemaker  
Berger Realty Inc  
3160 Asbury Avenue, Ocean City  
Call:  
Email to: fcs@bergerrealty.com

Scan to see Property page.

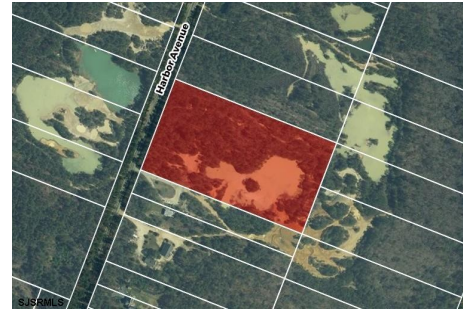


Berger Realty, Inc.  
3160 Asbury Avenue  
Ocean City, NJ 08226  
1-877-237-4371 / 609-399-0076  
info@bergerrealty.com



Harbor, Mays Landing, NJ, 08330

Price \$100,000.00



#### PROPERTY DETAILS

Total Rooms	
Bedrooms	0
Baths Full	0
Baths Half	0
Year Built	
Type	
Block Number	1303
Listing #	597177
Taxes	1009.00

#### COMMENTS

*Build your dream home on this vacant 9.72 acre lot. This property is being sold from an estate. All surveys and approvals are the responsibility of the buyer....*

#### PROPERTY FEATURES

#### CONTACT



Ask for Frank Shoemaker  
Berger Realty Inc  
3160 Asbury Avenue, Ocean City  
Call:  
Email to: fcs@bergerrealty.com

Scan to see Property page.

