

Berger Realty

Since 1926



Berger Realty, Inc.
3160 Asbury Avenue
Ocean City, NJ 08226
1-877-237-4371 / 609-399-0076
info@bergerrealty.com



1st, Mays Landing, NJ, 08330

Price \$40,000.00

PROPERTY DETAILS

Total Rooms	0
Bedrooms	0
Baths Full	0
Baths Half	0
Year Built	
Type	
Block Number	631
Listing #	597140
Taxes	151.00

COMMENTS

New Listing: 11-Acre Wooded Lot in Highly Desired Area – Perfect for Recreation! Don't miss this rare opportunity to own 11 beautiful acres of wooded land in a highly sought-after location. A recreational retreat, this property offers endless potential for every outdoorsman! Mature trees & natural landscape ideal for camping, hunting, hiking, Peaceful and private, ye...

PROPERTY FEATURES

CONTACT



Ask for Joyce McMahon
Berger Realty Inc
3160 Asbury Avenue, Ocean City
Call:
Email to: jmm@bergerrealty.com

Scan to see Property page.



Berger Realty

Since 1926



Berger Realty, Inc.
3160 Asbury Avenue
Ocean City, NJ 08226
1-877-237-4371 / 609-399-0076
info@bergerrealty.com



1st, Mays Landing, NJ, 08330

Price \$40,000.00

PROPERTY DETAILS

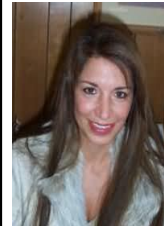
Total Rooms	0
Bedrooms	0
Baths Full	0
Baths Half	0
Year Built	
Type	
Block Number	631
Listing #	597140
Taxes	151.00

COMMENTS

New Listing: 11-Acre Wooded Lot in Highly Desired Area – Perfect for Recreation! Don't miss this rare opportunity to own 11 beautiful acres of wooded land in a highly sought-after location. A recreational retreat, this property offers endless potential for every outdoorsman! Mature trees & natural landscape ideal for camping, hunting, hiking, Peaceful and private, ye...

PROPERTY FEATURES

CONTACT



Ask for Joyce McMahon
Berger Realty Inc
3160 Asbury Avenue, Ocean City
Call:
Email to: jmm@bergerrealty.com

Scan to see Property page.

