

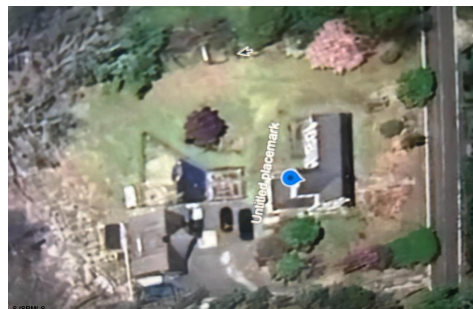


Berger Realty, Inc.
3160 Asbury Avenue
Ocean City, NJ 08226
1-877-237-4371 / 609-399-0076
info@bergerrealty.com



17 Main St, Port Republic, NJ, 08241

Price \$619,900.00



PROPERTY DETAILS

Total Rooms	12
Bedrooms	5
Baths Full	3
Baths Half	0
Year Built	1830
Type	Single Family
Block Number	29
Listing #	597044
Taxes	7390.00

COMMENTS

Charming Historic Home in Port Republic, NJ - A Blend of Old World Charm & Modern Potential Step back in time with this enchanting 1860s home nestled in the highly sought-after community of Port Republic, New Jersey. This beautifully maintained property offers five spacious bedrooms, exuding old-world charm and character at every turn. Highlights Include: Historic Elegance...

PROPERTY FEATURES

ParkingGarage	Heating	Water	Sewer
Two Car	Oil	Well	Septic
	Tank Above Ground		

CONTACT



Ask for Graham Ginn
Berger Realty Inc
3160 Asbury Avenue, Ocean City
Call: 609-602-4884
Email to: gmg@bergerrealty.com
https://www.ocnj.com

Scan to see Property page.

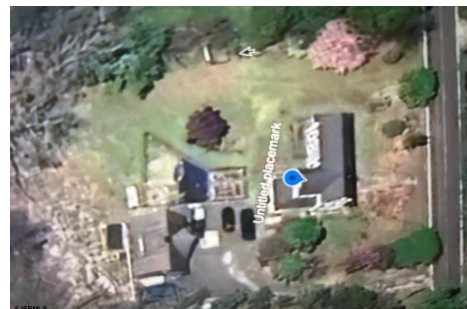


Berger Realty, Inc.
3160 Asbury Avenue
Ocean City, NJ 08226
1-877-237-4371 / 609-399-0076
info@bergerrealty.com



17 Main St, Port Republic, NJ, 08241

Price \$619,900.00



PROPERTY DETAILS

Total Rooms	12
Bedrooms	5
Baths Full	3
Baths Half	0
Year Built	1830
Type	Single Family
Block Number	29
Listing #	597044
Taxes	7390.00

COMMENTS

Charming Historic Home in Port Republic, NJ - A Blend of Old World Charm & Modern Potential Step back in time with this enchanting 1860s home nestled in the highly sought-after community of Port Republic, New Jersey. This beautifully maintained property offers five spacious bedrooms, exuding old-world charm and character at every turn. Highlights Include: Historic Elegance...

PROPERTY FEATURES

ParkingGarage	Heating	Water	Sewer
Two Car	Oil	Well	Septic
	Tank Above Ground		

CONTACT



Ask for Graham Ginn
Berger Realty Inc
3160 Asbury Avenue, Ocean City
Call: 609-602-4884
Email to: gmg@bergerrealty.com
https://www.ocnj.com

Scan to see Property page.

