

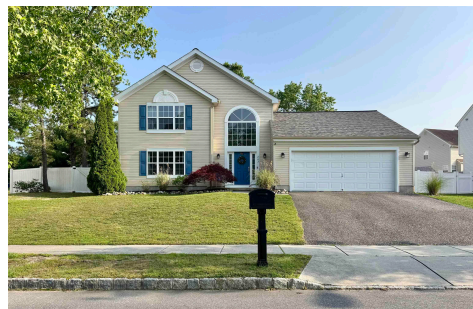


Berger Realty, Inc.  
3160 Asbury Avenue  
Ocean City, NJ 08226  
1-877-237-4371 / 609-399-0076  
info@bergerrealty.com



243 Churchill, Egg Harbor Township, NJ, 08234

Price \$514,900.00



#### PROPERTY DETAILS

Total Rooms	11
Bedrooms	4
Baths Full	2
Baths Half	1
Year Built	2008
Type	Single Family
Block Number	5204
Listing #	597007
Taxes	8636.00

#### COMMENTS

*Immaculate 4-Bedroom Home in Desirable Equestrian Estates – 243 Churchill Drive, EHT*  
*Welcome to 243 Churchill Drive, nestled in the sought-after Equestrian Estates neighborhood*  
*of Egg Harbor Township. Ideally located in the heart of EHT, this beautiful home is just*  
*minutes from premier golf courses, pristine local beaches, and iconic boardwalks. This*  
*meticulously maint...*

#### PROPERTY FEATURES

Exterior	OutsideFeatures	ParkingGarage	OtherRooms
Vinyl	Fenced Yard	Two Car	Den/TV Room
	Patio		Dining Area
	Pool-In Ground		Dining Room
	Shed		Laundry/Utility Room
	Sidewalks		Storage Attic
InteriorFeatures	AppliancesIncluded	AlsoIncluded	Basement
Storage	Disposal	Blinds	Crawl Space
Smoke/Fire Alarm	Dishwasher	Curtains	
Walk In Closet	Dryer		
	Gas Stove		
	Microwave		
	Refrigerator		
	Washer		
Heating	Cooling	HotWater	Water
Forced Air	Ceiling Fan(s)	Tankless-gas	Public
Gas-Natural	Central		

Sewer  
Public Sewer

#### CONTACT

Ask for Michael Moss  
Berger Realty Inc  
3160 Asbury Avenue, Ocean City  
Call: 908-309-6538  
Email to: mvm@bergerrealty.com

Scan to see Property page.



Berger Realty, Inc.  
3160 Asbury Avenue  
Ocean City, NJ 08226  
1-877-237-4371 / 609-399-0076  
info@bergerrealty.com



243 Churchill, Egg Harbor Township, NJ, 08234

Price \$514,900.00



#### PROPERTY DETAILS

Total Rooms	11
Bedrooms	4
Baths Full	2
Baths Half	1
Year Built	2008
Type	Single Family
Block Number	5204
Listing #	597007
Taxes	8636.00

#### COMMENTS

*Immaculate 4-Bedroom Home in Desirable Equestrian Estates – 243 Churchill Drive, EHT*  
*Welcome to 243 Churchill Drive, nestled in the sought-after Equestrian Estates neighborhood*  
*of Egg Harbor Township. Ideally located in the heart of EHT, this beautiful home is just*  
*minutes from premier golf courses, pristine local beaches, and iconic boardwalks. This*  
*meticulously maint...*

#### PROPERTY FEATURES

Exterior	OutsideFeatures	ParkingGarage	OtherRooms
Vinyl	Fenced Yard	Two Car	Den/TV Room
	Patio		Dining Area
	Pool-In Ground		Dining Room
	Shed		Laundry/Utility Room
	Sidewalks		Storage Attic
InteriorFeatures	AppliancesIncluded	AlsoIncluded	Basement
Storage	Disposal	Blinds	Crawl Space
Smoke/Fire Alarm	Dishwasher	Curtains	
Walk In Closet	Dryer		
	Gas Stove		
	Microwave		
	Refrigerator		
	Washer		
Heating	Cooling	HotWater	Water
Forced Air	Ceiling Fan(s)	Tankless-gas	Public
Gas-Natural	Central		

Sewer  
Public Sewer

#### CONTACT

Ask for Michael Moss  
Berger Realty Inc  
3160 Asbury Avenue, Ocean City  
Call: 908-309-6538  
Email to: mvm@bergerrealty.com

Scan to see Property page.

