

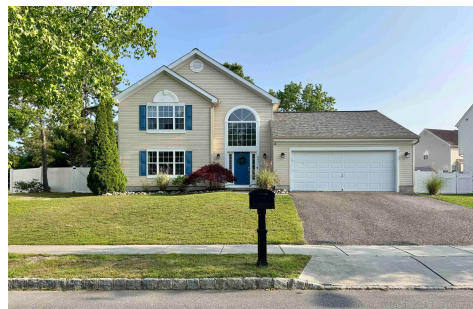


Berger Realty, Inc.
3160 Asbury Avenue
Ocean City, NJ 08226
1-877-237-4371 / 609-399-0076
info@bergerrealty.com



243 Churchill, Egg Harbor Township, NJ, 08234

Price \$514,900.00



PROPERTY DETAILS

| | |
|--------------|---------------|
| Total Rooms | 11 |
| Bedrooms | 4 |
| Baths Full | 2 |
| Baths Half | 1 |
| Year Built | 2008 |
| Type | Single Family |
| Block Number | 5204 |
| Listing # | 597007 |
| Taxes | 8636.00 |

COMMENTS

Immaculate 4-Bedroom Home in Desirable Equestrian Estates – 243 Churchill Drive, EHT
Welcome to 243 Churchill Drive, nestled in the sought-after Equestrian Estates neighborhood
of Egg Harbor Township. Ideally located in the heart of EHT, this beautiful home is just
minutes from premier golf courses, pristine local beaches, and iconic boardwalks. This
meticulously maint...

PROPERTY FEATURES

| | | | |
|-------------------------------------------------------------------|-----------------------------------------------------------------------------------------------------------|------------------------------------|--------------------------------------------------------------------------------------------------|
| Exterior Vinyl | OutsideFeatures Fenced Yard Patio Pool-In Ground Shed Sidewalks | ParkingGarage Two Car | OtherRooms Den/TV Room Dining Area Dining Room Laundry/Utility Room Storage Attic |
| InteriorFeatures Storage Smoke/Fire Alarm Walk In Closet | AppliancesIncluded Disposal Dishwasher Dryer Gas Stove Microwave Refrigerator Washer | AlsoIncluded Blinds Curtains | Basement Crawl Space |
| Heating Forced Air Gas-Natural | Cooling Ceiling Fan(s) Central | HotWater Tankless-gas | Water Public |

Sewer
Public Sewer

CONTACT

Ask for Marianne Johnsen
Berger Realty Inc
3160 Asbury Avenue, Ocean City
Call: 609-425-0622
Email to: maj@bergerrealty.com

Scan to see Property page.



Berger Realty, Inc.
3160 Asbury Avenue
Ocean City, NJ 08226
1-877-237-4371 / 609-399-0076
info@bergerrealty.com



243 Churchill, Egg Harbor Township, NJ, 08234

Price \$514,900.00



PROPERTY DETAILS

| | |
|--------------|---------------|
| Total Rooms | 11 |
| Bedrooms | 4 |
| Baths Full | 2 |
| Baths Half | 1 |
| Year Built | 2008 |
| Type | Single Family |
| Block Number | 5204 |
| Listing # | 597007 |
| Taxes | 8636.00 |

COMMENTS

Immaculate 4-Bedroom Home in Desirable Equestrian Estates – 243 Churchill Drive, EHT
Welcome to 243 Churchill Drive, nestled in the sought-after Equestrian Estates neighborhood
of Egg Harbor Township. Ideally located in the heart of EHT, this beautiful home is just
minutes from premier golf courses, pristine local beaches, and iconic boardwalks. This
meticulously maint...

PROPERTY FEATURES

| | | | |
|-------------------------------------------------------------------|-----------------------------------------------------------------------------------------------------------|------------------------------------|--------------------------------------------------------------------------------------------------|
| Exterior Vinyl | OutsideFeatures Fenced Yard Patio Pool-In Ground Shed Sidewalks | ParkingGarage Two Car | OtherRooms Den/TV Room Dining Area Dining Room Laundry/Utility Room Storage Attic |
| InteriorFeatures Storage Smoke/Fire Alarm Walk In Closet | AppliancesIncluded Disposal Dishwasher Dryer Gas Stove Microwave Refrigerator Washer | AlsoIncluded Blinds Curtains | Basement Crawl Space |
| Heating Forced Air Gas-Natural | Cooling Ceiling Fan(s) Central | HotWater Tankless-gas | Water Public |

Sewer
Public Sewer

CONTACT

Ask for Marianne Johnsen
Berger Realty Inc
3160 Asbury Avenue, Ocean City
Call: 609-425-0622
Email to: maj@bergerrealty.com

Scan to see Property page.

