

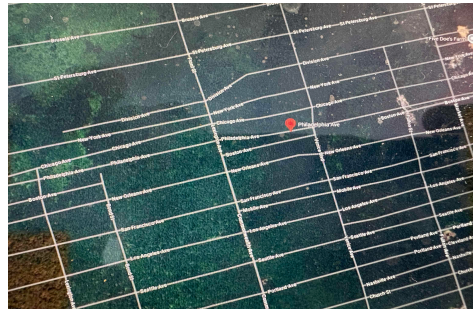


Berger Realty, Inc.
3160 Asbury Avenue
Ocean City, NJ 08226
1-877-237-4371 / 609-399-0076
info@bergerrealty.com



Philadelphia, Mays Landing, NJ, 08330

Price \$49,999.00



PROPERTY DETAILS

Total Rooms	
Bedrooms	0
Baths Full	0
Baths Half	0
Year Built	
Type	
Block Number	159
Listing #	597002
Taxes	148.00

COMMENTS

3.6 acre wooded lot in Mays Landing. The parcel is zoned RD-4. The buyer will be responsible for performing the proper due diligence....

PROPERTY FEATURES

CONTACT



Ask for Mary Kuchka
Berger Realty Inc
3160 Asbury Avenue, Ocean City
Call: 609-576-2790
Email to: mk@bergerrealty.com

Scan to see Property page.



Berger Realty, Inc.
3160 Asbury Avenue
Ocean City, NJ 08226
1-877-237-4371 / 609-399-0076
info@bergerrealty.com



Philadelphia, Mays Landing, NJ, 08330

Price \$49,999.00



PROPERTY DETAILS

Total Rooms	
Bedrooms	0
Baths Full	0
Baths Half	0
Year Built	
Type	
Block Number	159
Listing #	597002
Taxes	148.00

COMMENTS

3.6 acre wooded lot in Mays Landing. The parcel is zoned RD-4. The buyer will be responsible for performing the proper due diligence....

PROPERTY FEATURES

CONTACT



Ask for Mary Kuchka
Berger Realty Inc
3160 Asbury Avenue, Ocean City
Call: 609-576-2790
Email to: mk@bergerrealty.com

Scan to see Property page.

