



Berger Realty, Inc.  
3160 Asbury Avenue  
Ocean City, NJ 08226  
1-877-237-4371 / 609-399-0076  
info@bergerrealty.com



Philadelphia, Mays Landing, NJ, 08330

Price \$49,999.00

#### PROPERTY DETAILS

Total Rooms	
Bedrooms	0
Baths Full	0
Baths Half	0
Year Built	
Type	
Block Number	159
Listing #	597002
Taxes	148.00

#### COMMENTS

3.6 acre wooded lot in Mays Landing. The parcel is zoned RD-4. The buyer will be responsible for performing the proper due diligence....

#### PROPERTY FEATURES

#### CONTACT



Ask for Lauren Greiner  
Berger Realty Inc  
3160 Asbury Avenue, Ocean City  
Call: 609-602-5960  
Email to: lmg@bergerrealty.com

Scan to see Property page.



Berger Realty, Inc.  
3160 Asbury Avenue  
Ocean City, NJ 08226  
1-877-237-4371 / 609-399-0076  
info@bergerrealty.com



Philadelphia, Mays Landing, NJ, 08330

Price \$49,999.00

#### PROPERTY DETAILS

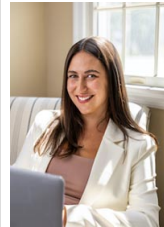
Total Rooms	
Bedrooms	0
Baths Full	0
Baths Half	0
Year Built	
Type	
Block Number	159
Listing #	597002
Taxes	148.00

#### COMMENTS

3.6 acre wooded lot in Mays Landing. The parcel is zoned RD-4. The buyer will be responsible for performing the proper due diligence....

#### PROPERTY FEATURES

#### CONTACT



Ask for Lauren Greiner  
Berger Realty Inc  
3160 Asbury Avenue, Ocean City  
Call: 609-602-5960  
Email to: lmg@bergerrealty.com

Scan to see Property page.

