

Berger Realty

Since 1926



Berger Realty, Inc.
3160 Asbury Avenue
Ocean City, NJ 08226
1-877-237-4371 / 609-399-0076
info@bergerrealty.com



271 6th, Mullica Township, NJ, 08215

Price \$180,000.00

PROPERTY DETAILS

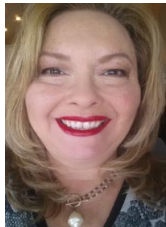
Total Rooms	
Bedrooms	0
Baths Full	0
Baths Half	0
Year Built	
Type	
Block Number	1117, 1118
Listing #	596973
Taxes	751.00

COMMENTS

This beautiful, wooded area has five lots on 25 acres of land. Located in Egg Harbor City. Blocks 1117 - Lot 1.01 and 1118.- 1.02, 3,4 and 5. Buyers are encouraged to perform their own due diligence. Call to make an offer soon....

PROPERTY FEATURES

CONTACT



Ask for Theresa Maina
Berger Realty Inc
3160 Asbury Avenue, Ocean City
Call: 609-703-7725
Email to: tam@bergerrealty.com

Scan to see Property page.



Berger Realty

Since 1926



Berger Realty, Inc.
3160 Asbury Avenue
Ocean City, NJ 08226
1-877-237-4371 / 609-399-0076
info@bergerrealty.com



271 6th, Mullica Township, NJ, 08215

Price \$180,000.00

PROPERTY DETAILS

Total Rooms	
Bedrooms	0
Baths Full	0
Baths Half	0
Year Built	
Type	
Block Number	1117, 1118
Listing #	596973
Taxes	751.00

COMMENTS

This beautiful, wooded area has five lots on 25 acres of land. Located in Egg Harbor City. Blocks 1117 - Lot 1.01 and 1118.- 1.02, 3,4 and 5. Buyers are encouraged to perform their own due diligence. Call to make an offer soon....

PROPERTY FEATURES

CONTACT



Ask for Theresa Maina
Berger Realty Inc
3160 Asbury Avenue, Ocean City
Call: 609-703-7725
Email to: tam@bergerrealty.com

Scan to see Property page.

