



Berger Realty, Inc.
3160 Asbury Avenue
Ocean City, NJ 08226
1-877-237-4371 / 609-399-0076
info@bergerrealty.com



43 Hickory Ln, Mays Landing, NJ, 08330

Price \$144,900.00



PROPERTY DETAILS

Total Rooms	7
Bedrooms	2
Baths Full	2
Baths Half	0
Year Built	
Type	Mobile Home w/o Land
Block Number	000
Listing #	596879
Taxes	

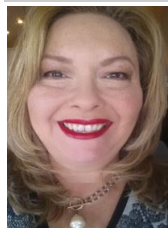
COMMENTS

Immediate Occupancy, 2 bedroom 2 full bath with 3 season room. Large welcoming living room with fireplace offers open floor leading to dining area and kitchen. Kitchen has lots of cabinets and work space. Laundry room with washer and dryer. Main bath in the hall and second bedroom featuring 2 closet are all right next to each other. The main bedroom ha...

PROPERTY FEATURES

ParkingGarage	Heating	Cooling	Water
None	Forced Air	Central	Public
	Gas-Natural		Well
Sewer			
Public Sewer			
Septic			

CONTACT



Ask for Theresa Maina
Berger Realty Inc
3160 Asbury Avenue, Ocean City
Call: 609-703-7725
Email to: tam@bergerrealty.com

Scan to see Property page.



Berger Realty, Inc.
3160 Asbury Avenue
Ocean City, NJ 08226
1-877-237-4371 / 609-399-0076
info@bergerrealty.com



43 Hickory Ln, Mays Landing, NJ, 08330

Price \$144,900.00



PROPERTY DETAILS

Total Rooms	7
Bedrooms	2
Baths Full	2
Baths Half	0
Year Built	
Type	Mobile Home w/o Land
Block Number	000
Listing #	596879
Taxes	

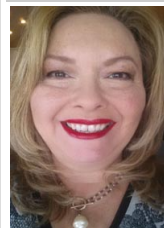
COMMENTS

Immediate Occupancy, 2 bedroom 2 full bath with 3 season room. Large welcoming living room with fireplace offers open floor leading to dining area and kitchen. Kitchen has lots of cabinets and work space. Laundry room with washer and dryer. Main bath in the hall and second bedroom featuring 2 closet are all right next to each other. The main bedroom ha...

PROPERTY FEATURES

ParkingGarage	Heating	Cooling	Water
None	Forced Air	Central	Public
	Gas-Natural		Well
Sewer			
Public Sewer			
Septic			

CONTACT



Ask for Theresa Maina
Berger Realty Inc
3160 Asbury Avenue, Ocean City
Call: 609-703-7725
Email to: tam@bergerrealty.com

Scan to see Property page.

